

International
Progress Report

IPR-06-14

Äspö Hard Rock Laboratory

Hydro Monitoring Program

Report for 2005

Göran Nyberg

Stig Jönsson

Eva Wass

GEOSIGMA Uppsala

May 2006

Svensk Kärnbränslehantering AB

Swedish Nuclear Fuel

and Waste Management Co

Box 5864

SE-102 40 Stockholm Sweden

Tel 08-459 84 00

+46 8 459 84 00

Fax 08-661 57 19

+46 8 661 57 19



**Äspö Hard Rock
Laboratory**

Report no.
IPR-06-14

Author
Göran Nyberg
Stig Jönsson
Eva Wass

Checked by
Niclas Bockgård

Approved
Anders Sjöland

No.
F53K

Date
May 2006

Date
2006-08-15

Date
2006-08-15

Äspö Hard Rock Laboratory

Hydro Monitoring Program

Report for 2005

Göran Nyberg
Stig Jönsson
Eva Wass

GEOSIGMA Uppsala

May 2006

Keywords: Groundwater, Borehole, Tunnel, Measurement methods, Äspö, HMS

This report concerns a study which was conducted for SKB. The conclusions and viewpoints presented in the report are those of the author(s) and do not necessarily coincide with those of the client.

Abstract

The Äspö island is situated close to the nuclear power plant of Simpevarp in south-eastern Sweden. As part of the pre-investigations preceding excavation of the Äspö Hard Rock Laboratory, registrations of the groundwater levels and electrical conductivity in packed-off borehole sections and levels in open boreholes started in 1987. The investigations are still ongoing and are planned to continue for a long period of time. As the tunnel excavation went on from the autumn 1990 and onwards, new boreholes were drilled in the tunnel and instrumented to enable groundwater pressure monitoring in packed-off sections. In addition, other hydro-related measurements such as water flow in the tunnel, electrical conductivity of tunnel water and inflow and outflow of water through tunnel pipes have been performed. This report is a summary of the monitoring during 2005.

In order to allow for comparison with factors that may influence the groundwater level/pressure and flow, meteorological data are presented in the report.

From the end of 1991, the disturbance from the tunnel is the dominating factor influencing groundwater levels in the area. In one chapter, activities that may have an influence on the ground water situation are listed and briefly discussed.

Sammanfattning

Äspö ligger nära Oskarshamns kärnkraftverk i sydöstra Sverige. Som en del av förundersökningarna inför anläggningen av Äspölaboratoriet påbörjades 1987 registrering av grundvattennivå och elektrisk konduktivitet i avmanschetterade borrhålssektioner och nivå i öppna borrhål. Nivåmätningarna pågår fortfarande och planeras fortgå under lång tid framöver. Från hösten 1990, under det att tunneln drevs, borrades nya hål i tunneln som instrumenterades för att möjliggöra mätningar av grundvattentrycket i avmanschetterade sektioner. Därtill har andra hydrorelaterade mätningar gjorts i tunneln såsom: vattenflöde i tunneln, grundvattnets elektriska ledningsförmåga samt in- och utflöde av vatten i tunnelledningar. Denna rapport sammanfattar mätningar som gjorts under 2005.

För att kunna relatera förändringar till faktorer som kan påverka grundvattnets nivå/tryck och flöde presenteras meteorologiska data i rapporten.

Från och med 1991, ett år efter det att tunneldrivningen startade, är störningen från tunneldrivningen den faktor som har störst påverkan på grundvattenytan i området. I ett kapitel redovisas och diskuteras översiktligt sådana aktiviteter som kan påverka grundvattnet.

Executive Summary

The construction of the Äspö Hard Rock Laboratory started in October 1990. The laboratory consists of an extensive tunnel system excavated down to a depth of 460 m below the ground surface. A 3.6 km long entrance tunnel to the laboratory, starting at the ground surface close to the nuclear power plant on the Simpevarp peninsula, has been excavated. Vertical shafts, connecting the laboratory with the ground surface of Äspö, were also drilled.

Extensive pre-investigations (e.g. aerial and ground geophysical surveys, mapping of solid rocks and borehole investigations) have been performed on Äspö and four adjacent areas: on the islands of Ävrö, Bockholmen and Mjälén east and south of Äspö and in the Laxemar area at the mainland west of Äspö. A large number of core and percussion boreholes have been drilled in these areas. One important part of the pre-investigations has been geohydrological borehole measurements, such as different types of hydraulic tests, hydrochemical investigations, tracer tests and groundwater level registrations.

The objectives of the geohydrological investigations are 1) to document the groundwater conditions before, during and after excavating the laboratory tunnel system, 2) to obtain a data set of hydraulic, transport and chemical parameters and 3) to meet the regulations imposed by the water rights court. The obtained parameters are essential in order to improve predictions of transient processes, e.g. predictions of groundwater level changes, which is one consequence of the tunnel excavation.

The groundwater level registrations were initiated in 1987, before the start of the tunnel excavation. The results of these registrations have consecutively been presented in annual reports (Nyberg, et al, 1991-2005). Earlier reports only comprised data collected in surface boreholes but as from the annual report for 1995, data collected from measurements in the tunnel were also included. The present paper is the annual report covering the year 2005. The following data have been collected:

1. Groundwater level data in surface boreholes
2. Groundwater pressure in tunnel boreholes
3. Water flow in tunnel
4. Water flow in tunnel pipes
5. Electrical conductivity of tunnel water
6. Precipitation
7. Air temperature
8. Potential evaporation

The meteorological data is collected at the SMHI (Swedish Meteorological and Hydrological Institute) meteorological stations situated as close as possible to the investigation area.

During 2005, there were 146 boreholes involved in the hydro-monitoring program within the five investigation areas and in the tunnel. Most of the boreholes are equipped with one or several rubber packers, which isolate up to ten borehole sections.

In the tunnel, 25 gauging boxes equipped with a v-notch weir are installed for flow measurements. Electrical conductivity of tunnel water has been measured at eleven locations. Water flow out of the tunnel in the discharge pipe is measured at 0/700 m tunnel length.

During the spring of 1991, the tunnel excavation began to affect the groundwater level in many surface boreholes. During 1992 and 1993 the effect of the tunnel is evident in all sub-areas except at Laxemar. In the areas on Äspö located near the tunnel spiral, the drainage caused by the tunnel has resulted in dramatic effects in many boreholes. In some borehole sections, the level has declined as much as 100 metres. Since 1994 the levels have gradually stabilised and during the last years the level decline in most boreholes has been within some metre. During 2005, the level changes were relatively small, within ± 0.5 m in most boreholes. Even if the changes are rather small, the long term overall picture is that a small decrease is still ongoing in many boreholes on the Äspö island as a result of the excavation of the Äspö HRL. During certain periods this decrease may be balanced by meteorological conditions resulting in increasing groundwater levels.

In most tunnel boreholes, the pressure was still decreasing (about 20-200 kPa) during 2005, but there were also sections with increasing pressure. Due to a lot of activities in the tunnel during the year (e.g. drilling, packer expansion and releases, opening, closing and pumping different boreholes) it is difficult to say whether the pressure changes are “natural” or due to the activities.

The flow in most gauging boxes has decreased when comparing mean flow for the period October – December for the latest eleven years. A few exceptions from this, especially in the deepest parts of the tunnel system, can be related to various activities. During the comparison period October – December, 1697 m³/d was pumped out from the tunnel, which is approximately 33 m³/d less than during the same period year 2004.

The total amount of precipitation during 2005 was 527 mm, which is 26 mm less than the mean for the comparison period 1961-90. Large amounts were measured in February, June, July and December while the precipitation in April, September and November were only 2 mm, 8 mm and 16 mm, respectively.

Contents

Abstract	i
Sammanfattning	iii
Executive Summary	v
Contents	vii
List of Figures	ix
List of Tables	ix
1 Introduction	1
2 Boreholes	5
2.1 Surface boreholes	5
2.2 Tunnel Boreholes	8
3 Measurements methods	11
3.1 Data collection	11
3.2 Groundwater level measurements in surface boreholes	13
3.2.1 Monitoring in surface boreholes	13
3.2.2 Absolute pressure in borehole sections	15
3.2.3 Calibration method	16
3.3 Groundwater pressure in tunnel boreholes	17
3.3.1 Monitoring in tunnel boreholes	17
3.4 Water flow in tunnel	23
3.4.1 Instrumentation	23
3.4.2 Methodology	26
3.4.3 Accuracy	26
3.5 Water flow in tunnel pipes	26
3.5.1 Methodology	27
3.5.2 Accuracy	27
3.6 Electrical conductivity of tunnel water	27
3.6.1 Methodology	28
3.6.2 Accuracy	28
3.7 Meteorological data	29
3.7.1 Precipitation	29
3.7.2 Temperature	29
3.7.3 Potential Evapotranspiration	30

4	Summary of activities influencing groundwater levels, pressure and flow	31
4.1	General	31
4.2	Tunnel excavation and permanent reinforcement	32
4.3	Opening of valves in tunnel boreholes	35
4.4	Packer expansion and release	38
4.5	Drilling	40
4.6	Tests	40
5	Results	43
5.1	Groundwater levels in surface boreholes	43
5.2	Groundwater pressure in tunnel boreholes	43
5.3	Water flow in the tunnel	44
5.4	Water flow in tunnel pipes	45
5.5	Electrical conductivity of tunnel water	46
5.6	Precipitation	47
5.7	Air temperature	48
5.8	Potential evapotranspiration	49
	References	51

List of Figures

Figure 1-1	Location of the Äspö Hard Rock Laboratory area and of the stations used to collect background data.	2
Figure 1-2	The investigation area with borehole locations.	3
Figure 3-1	Schematic picture showing the tunnel drainage system.	25
Figure 5-1	Water flow in all gauging boxes as a mean during October - December.	45
Figure 5-2	Precipitation at Oskarshamn: Monthly values 2005 and monthly means 1961 – 1990.	47
Figure 5-3	Precipitation at Oskarshamn. Yearly values 1987 - 2005 and yearly mean for the period 1961 - 1990.	47
Figure 5-4	Temperature at Oskarshamn: Monthly values 2005 and monthly means 1961 – 1990.	48
Figure 5-5	Temperature at Oskarshamn. Yearly values 1987 - 2005 and yearly mean for the period 1961 - 1990.	48
Figure 5-6	Potential evapotranspiration. Monthly values for Gladhammar 2005 and monthly means 1987 - 2005 (an average from Gladhammar and Ölands Norra Udde is used before August 1st, 1995).	49
Figure 5-7	Potential evapotranspiration as average from Gladhammar and Ölands Norra Udde (only Gladhammar from August 1st, 1995). Yearly values 1987 - 2005 and yearly mean for the period 1987 - 2005.	49

List of Tables

Table 2-1	Borehole deviation, length, elevation of top of casing, length of casing and date for the completion of drilling.	5
Table 2-2	Borehole diameters.	7
Table 2-3	Borehole deviation, length, minimum diameter, elevation at tunnel wall, length of casing and date for the completion of drilling.	8
Table 3-1	Monitoring equipment in surface boreholes.	12
Table 3-2	Monitoring equipment in tunnel boreholes.	12
Table 3-3	Monitored sections in surface boreholes.	14
Table 3-4	Electrical conductivity and calculated density (at 25° C) of water in tubes between section and ground.	16
Table 3-5	Monitored sections in tunnel boreholes.	17

Table 3-6	Water flow measurements in tunnel segments.	24
Table 3-7	Electrical conductivity of water in tunnel segments.	28
Table 4-1	Tunnel excavation and permanent reinforcements.	32
Table 4-2	Open valves in tunnel boreholes.	35
Table 4-3	Packer expansion and release in surface boreholes.	38
Table 4-4	Packer expansion and release in tunnel boreholes.	39
Table 4-5	Drilling	40
Table 4-6	Tests	42
Table 5-1	Water flow in tunnel pipes, October - December.	45

1 Introduction

Since October 1990, construction work for the Äspö Hard Rock Laboratory, situated a few kilometres north of the nuclear power plant of Simpevarp in south-eastern Sweden (Figure 1-1), are in progress. The laboratory is situated at a depth of up to 460 m below the ground surface of the small island of Äspö. The entrance tunnel, starting at the ground surface on the mainland close to the nuclear power plant, has a length of about 3.6 km. Three vertical shafts (elevator and two ventilation shafts), which connect the laboratory with the ground surface of Äspö, have been excavated. A large number of surface boreholes have been drilled on Äspö and on the adjacent islands of Ävrö, Bockholmen and Mjälén and in the Laxemar area on the mainland west of Äspö (Figure 1-2).

The groundwater level investigations in surface boreholes performed to this date have been described in several progress reports. The groundwater level registrations are ongoing since 1987. The measurements have continued during the entire period of tunnel excavation and will go on for a long period afterwards. The registrations are presented in annual reports (Nyberg et al, 1991-2005). The first report, however, contained groundwater level data from three years: 1987-89 (Nyberg et al, 1991). As from the report for 1995, tunnel data are also included. The present paper is the annual report covering the year 2005. The following data have been collected:

- 1) groundwater level in surface boreholes
- 2) groundwater pressure in tunnel boreholes
- 3) water flow in tunnel
- 4) water flow in tunnel pipes
- 5) electrical conductivity of tunnel water

Background data considered necessary for interpreting changes of groundwater levels are also presented in the report. This includes:

- 6) precipitation in Oskarshamn (SMHI)
- 7) air temperature in Oskarshamn (SMHI)
- 8) potential evapotranspiration calculated using data from the meteorological station at Gladhammar (southwest of Västervik), but with cloudiness (which is one of the input variables) from the Målilla station



Figure 1-1 Location of the Äspö Hard Rock Laboratory area and of the stations used to collect background data.

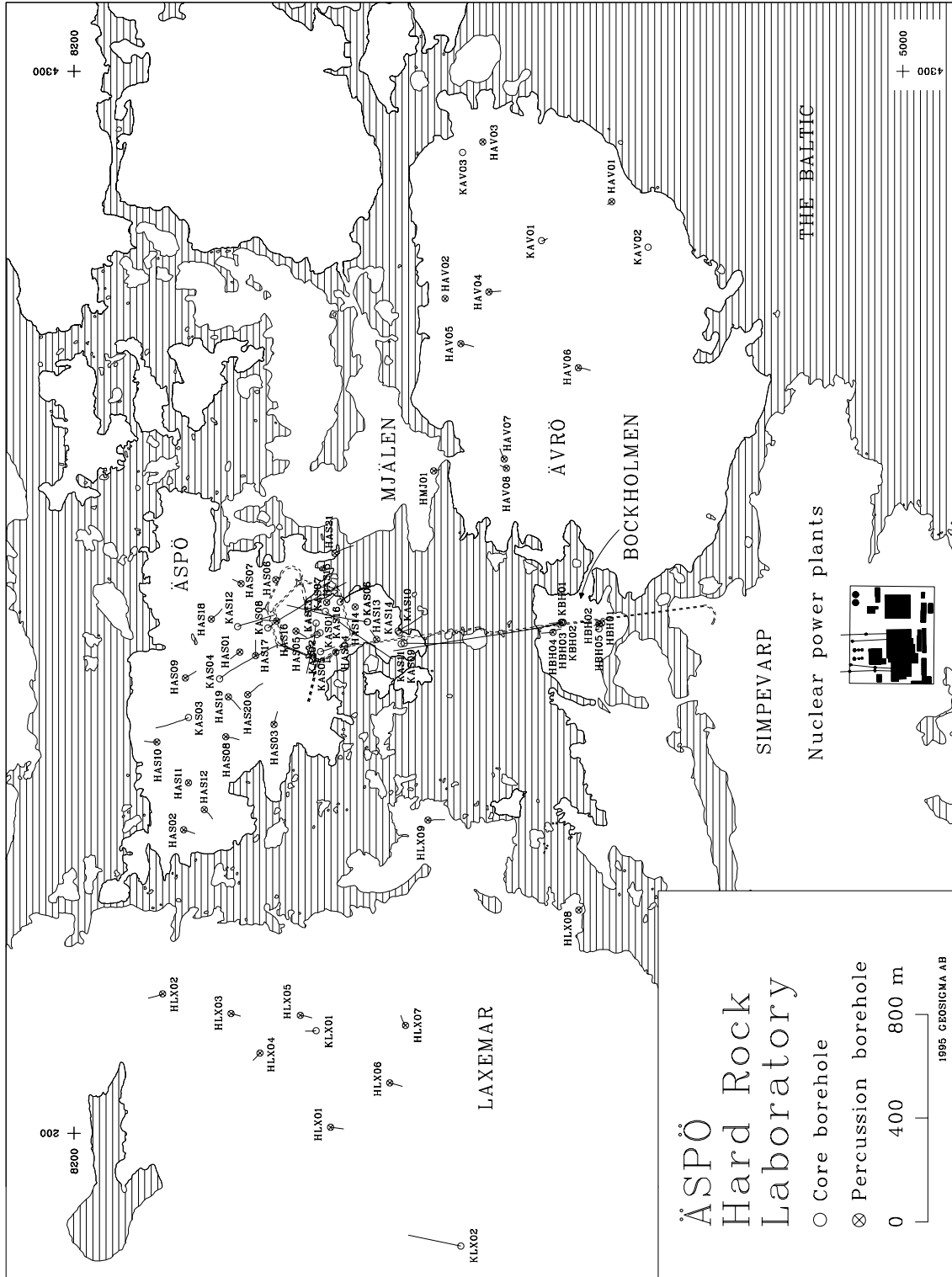


Figure 1-2 The investigation area with borehole locations.

2 Boreholes

2.1 Surface boreholes

The locations of the boreholes are shown in Figure 1-2. The extent of the monitoring program for surface boreholes during 2005 is shown in Table 3-3.

The borehole deviation (inclination and bearing), borehole length, elevation of the top of casing, length of casing and finally the date for completion of drilling are presented in Table 2-1.

The height above ground for the top of casing is normally less than half a meter, typically about 30 cm.

Table 2-1 Borehole deviation, length, elevation of top of casing, length of casing and date for the completion of drilling.

Borehole	Inclination at ground (°)	Bearing * at ground (°)	Borehole length (m)	Elevation at top of casing (m.a.s.l)	Length of casing (m)	Drilling completed
HAS01	-60.7	327	100.00	6.38	1.20	870807
HAS02	-55.4	198	93.00	2.11	1.60	870801
HAS03	-55.6	108	100.00	2.36	1.60	870803
HAS04	-61.2	257	100			870804
			201.00	6.26	1.40	8904
HAS05	-58.1	207	100.00	6.31	1.40	870806
HAS06	-88.1	261	100.00	4.80	1.00	870806
HAS07	-61.5	30	100.00	3.76	2.00	870801
HAS08	-58.0	189	125.00	6.62	1.50	880319
HAS09	-59.3	150	125.00	7.84	1.50	880320
HAS10	-60.6	2	125.00	6.35	1.50	880322
HAS11	-89.3	356	125.00	5.59	1.50	880323
HAS12	-59.9	222	125.00	2.88	1.50	880325
HAS13	-60.3	60	100.00	2.05	3.00	881212
HAS14	-88.0	255	100.00	1.67	1.50	890118
HAS15	≈-60	≈ 136	120	4.19		890420
HAS16	≈-60	≈ 5	120	4.36		890416
HAS17	≈-60	≈ 90	120	7.89		890418
HAS18	-62.2	147	150	7.54	6.00	900319
HAS19	-57.3	220	150	8.97	6.00	900313
HAS20	-60.5	142	150	6.24	6.00	900319
HAS21	-60	151	148	3.04	3.00	911106
HAV01	-88.6	334	175.00	9.27		860813
HAV02	-89.1	137	163.00	6.08		860821
HAV03	-88.0	160	134.20	9.17		860824
HAV04	-60.1	180	100.00	7.97	0.40	870724
HAV05	-54.5	191	100.00	6.83	1.00	870728
HAV06	-59.5	190	100.00	12.39	1.20	870730
HAV07	-56.2	66	100.00	4.14	4.00	870728
HAV08	-61.9	28	63.00	7.05		Before 1984
HBH01	-58.5	352	50.6	4.71	3.0	910220
HBH02	-47.5	346	32.4	4.68	3.0	910221

Borehole	Inclination at ground (°)	Bearing * at ground (°)	Borehole length (m)	Elevation at top of casing (m.a.s.l)	Length of casing (m)	Drilling completed
HBH03	-58.2	356	100	5.92	1.2	910306
HBH04	-59.7	356	90.4	5.52	5.1	<i>910307</i>
HBH05	≈-45	≈ 347	22	2.97	6.7	9206(01?)
HLX01	-59.4	188	100.63	8.90	3.00	871021
HLX02	-57.4	340	100			871027
			132.00	9.01	0.60	<i>871110</i>
HLX03	-62.4	198	100.00	10.43	1.40	871104
HLX04	-63.6	314	125.00	10.33	1.20	871106
HLX05	-57.7	188	100.00	15.68	0.60	871105
HLX06	-59.9	191	100.00	15.45	1.00	871030
HLX07	-59.4	60	100.00	8.58	1.00	871103
HLX08	-47.8	137	40	2.19	6.0	911114
HLX09	-61.3	180	151	3.28	3.0	911121
HMJ01	-60.0	182	46	1.39	6.0	911030
KAS01	≈-85	≈ 330	101.00	8.18	1.00	871030
KAS02	-84.5	331	924.04	7.68	1.05	871221
KAS03	-82.9	339	1002.26	8.79	1.11	880407
KAS04	-59.9	141	480.98	11.66	100.70	880501
KAS05	-84.9	164	549.60	8.68	1.05	890227
KAS06	-59.6	8	602.17	5.16	1.30	890129
KAS07	-59.1	218	603.75	4.58	1.15	<i>890131</i>
KAS08	-59.0	146	601.49	7.66	100.00	<i>890219</i>
KAS09	-59.9	182	450.62	4.08	100.65	891122
KAS10	≈-60	≈ 162	99.93	3.72	2.50	891023
KAS11	-88.7	35	248.90	4.22	6.00	900221
KAS12	-69.9	162	380.40	4.83	6.00	900320
KAS13	-62.2	281	406.95	3.84	6.00	900314
KAS14	-61.3	149	211.85	3.35	6.00	900511
KAS16	-84.5	139	548.46	3.66	6.00	920902
KAV01	-89.2	237	502			770516
			746.60			861116
			757.31	14.07	68.04	040110
KAV02	-89.5	39	97.10	7.52	12.40	770531
KAV03	-89.4	147	248.40	8.71	2.80	861005
KBH02	-45.0	348	706.35	5.50	5.50	900517
KLX01	-85.3	359	702.11		0-101.30	880205
			1077.99	16.74	268.3-700	900804
KLX02	-85.0	10	1700.50	18.37	202.95	921129

≈ Deviation in borehole is not measured. Value is intended deviation at start of drilling.

* Degrees (0-360) measured clockwise in local system. Magnetic bearing is achieved by subtracting 12.1°.

Italics = This information is not found in the Sicada database or the information is questioned.

The borehole diameters are presented in Table 2-2. Most boreholes are enlarged in the uppermost part to allow for the installation of casing. All core boreholes except five are "telescope drilled"; i.e. the diameter of the upper part is larger than below. Exceptions are KAS01, KAS10 and KBH01, where drilling was unsuccessful, and two core boreholes on Ävrö, KAV02 and KAV03, which were not telescope drilled. Normally,

the enlarged part has a length of approximately 100 m. All telescope drilled core boreholes have an enlargement (approximately 1 m long) where the diameter changes to make room for a funnel-shaped pipe, which gives a smooth transition between the two borehole diameters.

Table 2-2 Borehole diameters.

Borehole	Borehole diameter (mm)	Length of borehole		Borehole	Borehole diameter (mm)	Length of borehole	
		from (m)	to (m)			from (m)	to (m)
HAS01	115	0.00	100.00	KAS01	115	0.00	95.85
HAS02	115	0.00	93.00		115	95.85	101.00
HAS03	115	0.00	100.00	KAS02	155	0.00	93.35
HAS04	115	0.00	201.00		56	93.35	924.04
HAS05	115	0.00	100.00	KAS03	?	0.00	1.11
HAS06	115	0.00	100.00		164	1.11	100.80
HAS07	115	0.00	100.00		56	100.80	1002.26
HAS08	115	0.00	125.00	KAS04	155	0.00	100.70
HAS09	115	0.00	125.00		56	100.70	480.98
HAS10	115	0.00	125.00	KAS05	164	0.00	150.00
HAS11	115	0.00	125.00		76	150.00	549.60
HAS12	115	0.00	125.00	KAS06	164	0.00	100.00
HAS13	115	0.00	100.00		56	100.00	602.17
HAS14	115	0.00	100.00	KAS07	164	0.00	100.00
HAS15	115	0.00	120.00		56	100.00	603.75
HAS16	115	0.00	120.00	KAS08	164	0.00	100.00
HAS17	115	0.00	120.00		56	100.00	601.49
HAS18	250	0.00	6.00	KAS09	167	0.00	100.65
	162	6.00	150.00		56	100.65	450.62
HAS19	250	0.00	6.00	KAS10	56	0.00	99.93
	158	6.00	150.00	KAS11	160	0.00	40.40
HAS20	250	0.00	6.00		56	40.40	248.90
	152	6.00	150.00	KAS12	167	0.00	100.05
HAS21	115	0.00	148.00		56	100.05	380.40
HAV01	110	0.00	175.00	KAS13	162	0.00	100.20
HAV02	110	0.00	163.00		56	100.2	104.35
HAV03	110	0.00	134.20		76	104.35	257.45
HAV04	115	0.00	100.00		56	257.45	406.95
HAV05	115	0.00	100.00	KAS14	164	0.00	100.44
HAV06	115	0.00	100.00		56	101.40	211.85
HAV07	115	0.00	100.00	KAS16	164	0.00	100.00
HAV08	76	0.00	63.00		50	100.00	548.46
HBH01	115	0.00	50.60	KAV01	200	0.04	68.74
HBH02	115	0.00	32.40		165	68.74	68.84
HBH03	115	0.00	100.00		76	68.84	70.04
HBH04	115	0.00	90.40		56	70.04	757.31
HBH05	115	0.00	22.00	KAV02	56	0.00	97.10
HLX01	115	0.00	100.00	KAV03	56	0.00	248.40
HLX02	115	0.00	132.00	KBH02	165	0.00	101.50
HLX03	115	0.00	100.00		56	101.50	706.35
HLX04	115	0.00	125.00	KLX01	?	0.00	1.00
HLX05	115	0.00	100.00		155	1.00	101.30
HLX06	115	0.00	100.00		76	101.30	702.11
HLX07	115	0.00	100.00		56	702.11	1077.99
HLX08	115	0.00	40.00	KLX02	340	0.40	3.00
HLX09	115	0.00	151.00		215	3.00	200.80
HMJ01	115	0.00	46.00		165	200.80	201.00
					92	201.00	202.95
					76	202.95	1700.50

2.2 Tunnel Boreholes

The borehole deviation (inclination and bearing), borehole length, borehole diameter, elevation of the starting point at the tunnel wall, length of casing and the date for completion of drilling are presented in Table 2-3. Only those boreholes that have been monitored within the HMS during 2005 are listed.

Many boreholes are enlarged in the outermost 2 - 2.5 metres to enable installation of casing. Except for HA1283B and KA3065A03, which were lengthened with a smaller diameter, the diameter inside the casing enlargement does not change.

Table 2-3 Borehole deviation, length, minimum diameter, elevation at tunnel wall, length of casing and date for the completion of drilling.

Borehole	Inclination at top of b.h. (°)	Bearing * at top of b.h. (°)	Borehole length (m)	Borehole mindia- meter (mm)	Elevation at tunnel wall (m.a.s.l.)	Length of casing (m)	Drilling completed
HA1273A	10.7	351.3	30	57	-174.22	2.00	920423
HA1278A	4.3	304.8	29	57	-175.67	2.00	920910
HA1279A	2.8	311.6	24	57	-175.64	2.00	920910
HA1283B	-8.0	352.7	35.5 40.2	57 51	-176.54	2.00	920415
HA1327B	-0.5	140.0	29.5	57	-182.80	2.00	920911
HA1330B	-0.5	100.0	32.5	57	-182.98	No c.	920911
HA1960A	-7.0	89.0	32	57	-263.72	No c.	930121
HD0025A	7.0	88.7	15	57	-416.69	?	941111
KA1061A	0.6	349.6	208.5	56	-144.92	2.00	920123
KA1131B	-12.9	0.5	203.1	56	-155.29	2.00	920212
KA1751A	-5.2	274.2	149.91	56	-237.55	2.00	930504
KA1754A	-26.2	299.9	159.88	56	-237.83	2.00	930519
KA1755A	-19.9	339.4	320.58	56	-237.79	2.42	940406
KA2048B	-10.6	190.9	184.45	56	-275.42	2.00	930216
KA2050A	-53.5	55.3	211.57	56	-275.78	2.50	931102
KA2162B	-15.2	272.2	288.1	56	-289.86	2.50	930401
KA2511A	-33.3	234.8	293	56	-335.87	2.50	930905
KA2563A	-42.5	237.2	363.43	56	-340.78	2.05	960924
KA2598A	-32.2	292.6	300.77	56	-342.38	?	930928
KA2858A	-4.3	287.0	59.7	56	-379.37	2.50	950115
KA2862A	-8.0	15.9	15.98	56	-379.53	2.50	950125
KA3005A	-4.5	299.1	58.11	56	-399.85	2.50	941205
KA3010A	-4.7	99.5	60.66	56	-399.86	2.50	941208
KA3065A02	-4.9	59.9	69.95	76	-408.24	2.55	990422
KA3065A03	-4.7	55.8	9.20 10.40 11.35	300 196 36	-408.08	2.34	011003
KA3067A	-4.7	98.4	40.05	56	-408.58	2.50	941211

Borehole	Inclination at top of b.h. (°)	Bearing * at top of b.h. (°)	Borehole length (m)	Borehole mindia- meter (mm)	Elevation at tunnel wall (m.a.s.l.)	Length of casing (m)	Drilling completed
KA3068A	2.8	113.8	16.85	86	-408.37	No c?	940603
KA3105A	-4.7	102.5	68.95	56	-413.67	2.50	941215
KA3110A	-5.4	238.3	26.83	56	-413.70	2.50	941217
KA3385A	-4.8	161.0	34.18	56	-446.00	No c.	950110
KA3386A01	-1.9	219.9	65.11	76	-446.10	2.51	020615
KA3510A	-30.1	255.3	150.06	76	-448.69	2.35	960909
KA3539G	-80.5	274.2	30.01	76	-449.18	No c.	980513
KA3542G01	-44.9	188.7	30.04	76	-449.06	No c.	980603
KA3542G02	-44.2	6.3	30.01	76	-449.06	No c.	980605
KA3543A01	-0.8	234.1	2.06	56	-446.79	No c.	001005
KA3543I01	70.5	195.5	2.06	56	-444.07	No c.	001011
KA3544G01	-90.0	0.0	12	76	-448.94	No c.	980325
KA3546G01	-89.8	194.0	12	76	-448.88	No c.	980324
KA3548A01	-3.1	188.3	30	76	-446.57	2.5	980628
KA3548D01	2.7	52.6	2.06	56	-445.86	No c.	001006
KA3548G01	-89.7	75.8	12.01	76	-448.99	No c.	980323
KA3550G01	-89.2	249.0	12.03	76	-448.76	No c.	980322
KA3550G05	-89.2	25.0	3	56	-448.95	No c.	001030
KA3551G05	-89.9	356.1	3.1	56	-448.90	No c.	001027
KA3552A01	-2.8	233.6	2.06	56	-446.61	No c.	000928
KA3552G01	-89.5	130.6	12.01	76	-448.76	No c.	980321
KA3552H01	58.2	267.7	2.1	56	-443.97	No c.	001012
KA3553B01	-37.7	8.1	2.02	56	-446.54	No c.	001004
KA3554G01	-45.0	188.2	30.01	76	-448.83	No c.	980607
KA3554G02	-45.0	8.2	30.01	76	-448.81	No c.	980606
KA3557G	-81.5	271.2	30.04	76	-448.84	No c.	980512
KA3563A01	-7.7	233.8	2.06	56	-447.05	No c.	000922
KA3563D01	2.5	53.7	2.01	56	-446.15	No c.	000925
KA3563G	-79.9	277.9	30	76	-448.68	No c.	980507
KA3563I01	73.0	235.9	2.15	56	-443.63	No c.	001011
KA3566C01	3.5	232.3	2.1	56	-445.55	No c.	000920
KA3566G01	-44.9	188.8	30.01	76	-448.56	No c.	980609
KA3566G02	-43.8	7.7	30.01	76	-448.56	No c.	980610
KA3568D01	-2.3	54.4	2.3	56	-445.82	No c.	000925
KA3572G01	-89.6	225.0	12	76	-448.50	No c.	980320
KA3573A	-2.1	188.3	40.07	76	-446.06	2.65	970911
KA3573C01	34.9	232.3	2.05	56	-445.12	No c.	000926
KA3574D01	12.6	55.5	2.05	56	-445.11	No c.	000926
KA3574G01	-89.2	249.0	12	76	-448.32	No c.	980428
KA3576G01	-89.2	213.7	12.01	76	-448.26	No c.	980426
KA3578C01	-5.3	232.4	2.09	56	-445.33	No c.	000928
KA3578G01	-89.0	252.7	12.58	76	-448.37	No c.	980319
KA3578H01	59.1	266.7	1.9	56	-443.37	No c.	001002
KA3579D01	-1.0	54.2	2	56	-445.42	No c.	000922
KA3579G	-89.3	296.6	22.65	76	-448.36	No c.	971008

Borehole	Inclination at top of b.h. (°)	Bearing * at top of b.h. (°)	Borehole length (m)	Borehole mindia- meter (mm)	Elevation at tunnel wall (m.a.s.l.)	Length of casing (m)	Drilling completed
KA3584G01	-89.2	212.5	12	76	-448.24	No c.	980319
KA3588C01	-4.0	232.8	2.04	56	-445.43	No c.	000926
KA3588D01	-1.8	55.0	1.9	56	-445.23	No c.	000925
KA3588I01	65.6	5.2	1.96	56	-443.33	No c.	001019
KA3590G01	-44.4	186.7	30.06	76	-448.05	No c.	980623
KA3590G02	-43.8	7.9	30.05	76	-448.07	No c.	980616
KA3592C01	4.4	233.8	2.1	56	-445.24	No c.	000926
KA3593G	-79.8	275.2	30.02	76	-448.06	No c.	980504
KA3597D01	3.1	53.5	2.22	56	-445.09	No c.	001004
KA3597H01	55.1	248.8	2.06	56	-443.17	No c.	001005
KA3600F	-1.7	248.4	50.1	76	-445.57	2.65	970924
KF0051A01	29.9	310.3	11.70	76	-451.38	2.50	980527
KF0069A01	-1.8	28.9	70.09	76	-454.81	2.54	020521
KG0021A01	17.7	220.1	48.82	76	-445.14	2.50	980708
KG0048A01	14.0	222.4	54.69	76	-444.48	2.42	980804
KI0023B	-20.7	214.6	200.71	76	-447.68	2.65	971120
KI0025F	-20.2	187.1	193.8	76	-448.22	2.50	970425
KI0025F02	-25.5	200.0	204.18	76	-448.52	2.65	980825
KI0025F03	-29.8	206.9	141.72	76	-448.07	2.50	990813
KR0012B	-1.0	315.0	10.57	38	-69.05	No c.	910503
KR0013B	-1.0	296.0	16.94	38	-69.05	No c.	910430
KR0015B	-1.0	289.0	30.31	38	-69.09	No c.	910504
KXTT1	-46.8	61.2	28.76	56	-392.11	2.50	950518
KXTT2	-45.2	61.4	18.3	56	-392.41	2.50	950522
KXTT3	-36.7	51.4	17.43	56	-391.06	2.50	950606
KXTT4	-36.5	61.5	49.31	56	-391.09	2.50	950616
KXTT5	-15.0	47.6	25.85	76	-390.29	2.55	990505
SA2142A	-9.0	174.0	20	57	-287.40	No c.	930223
SA2338A	-7.0	234.0	20	57	-313.02	No c.	930414
SA3045A	-10.5	132.2	20.7	57	-405.41	No c?	940227

* Degrees (0-360) measured clockwise in local system. Magnetic bearing is achieved by subtracting 12.1°.

3 Measurements methods

3.1 Data collection

Four different logger units are used to collect pressure data. The most important components of these units are a multiplexer (except in GRUND), an A/D converter, a data storing facility and a serial I/O port. They all have a battery power supply, either as the only supply or for safety.

The Datascan unit has a multiplexer, an A/D converter and a serial I/O port.

In the tunnel, pressure in borehole sections are measured either via a hydraulic multiplexer or by individual transducers for each section connected directly to a Borre logger, a Datascan unit or a PLC. The hydraulic multiplexer holds a pressure transducer connected to a Borre logger of a type that can operate the magnetic valves on the multiplexer.

Below follows a summary of the units that are used.

BorreF is a logger with a 16 bits A/D converter. This logger is a stand-alone type used at the surface only.

BorreR is a logger with a 16 bits A/D converter. This logger communicates with a measurement station either by radio or via the power net. Used at the surface only.

BorreT is a logger with a 16 bits A/D converter communicating with a measurement station on a Borre data network. This logger, which can operate magnetic valves on a hydraulic multiplexer, is used in the tunnel only.

Grund is a single channel logger with a 13 bits A/D converter. This logger is a stand-alone type used at the surface only.

Datascan has a 16 bits A/D converter. This unit is connected directly to a measurement station and used in the tunnel only.

A **PLC** (Programmable Logic Controller) consists of several parts; a CPU, a power unit, digital and analog inputs/outputs. It is connected to a measurement station and is only used for the tunnel boreholes included in the LTDE experiment.

The logger types used for different boreholes on the surface are presented in Table 3-1.

Table 3-1 Monitoring equipment in surface boreholes.

Borehole	Section	Equipment	from	To	Borehole	Section	Equipment	from	To
HAS01	1	BorreR	91-09		HBH01	1	Manually	040101	
HAS02	1	Manually	970320		HBH02	1	Manually	040101	
HAS03	1	Manually	981018		HBH04	1	BorreR	91-12	050530
HAS04	1-2	BorreR	91-09			1	Manually	050530	
HAS05	1	Manually	970320			2	Manually	91-03	
HAS06	1	BorreR	91-09		HLX01	1	Manually	000917	050919
HAS07	1	BorreR	970218		HLX02	1	Manually	000917	050919
HAS08	1	Manually	970130		HLX03	1	Manually	000917	
HAS09	1	Manually	970320		HLX04	1	Manually	970129	
HAS10	1	Manually	970320		HLX05	1	BorreR	950901	050530
HAS11	1	BorreF	000912			1	Manually	050530	
HAS12	1	Manually	970320		HLX06	1	Manually	000917	050919
HAS13	1	BorreR	91-09		HLX07	1	Manually	000917	050919
HAS14	1	Manually	970320		HMJ01	1	Grund	91-12	
HAS15	1	BorreR	970522			2	Manually	92-01	
HAS16	1	BorreR	91-09		KAS03	1-6	BorreR	91-09	
HAS17	1-2	BorreR	91-09	050419	KAS04	1	Manually	970320	
	1	Manually	050419		KAS07	1	Manually	970220	
HAS18	1	Manually	970227		KAS09	1-5	BorreR	91-09	
HAS19	1-2	BorreR	91-09	050419	KAS10	1	BorreR	91-09	
	1	Manually	050419		KAS11	1	Manually	970320	
HAS20	1	Manually	970130		KAS14	1	Manually	970320	
HAS21	1	BorreR	970130		KAS16	1	Manually	92-10	
HAV01	1	Manually	000917			2-4	BorreR	92-10	
HAV03	1	Manually	000917		KBH02	3-6	BorreR	91-09	050530
HAV04	1	Manually	000917			3-6	Manually	050530	
HAV08	1	Grund	91-12						

Note - Data not relevant for 2005 is to be found in earlier annual reports.

In Table 3-2, the data-collecting units used for pressure measurements in different borehole sections in the tunnel are presented.

Table 3-2 Monitoring equipment in tunnel boreholes.

Borehole	Sect. no	Equipment	Date from	to	Borehole	Sect. no	Equipment	Date from	to
HA1273A	1	HM ⁺ +BorreT			KA2858A	2	Datascan	011024	
HA1278A	1	HM+BorreT			KA2862A	1	Datascan	011024	
HA1279A	1	HM+BorreT			KA3005A	2-5	Datascan	011024	
HA1283B	1	HM+BorreT			KA3010A	2	Datascan	011024	
HA1327B	1	HM+BorreT			KA3065A02	1-4	PLC	040121	
HA1330B	1	HM+BorreT			KA3065A03	1-5	PLC	040121	
HA1960A	1	HM+BorreT			KA3067A	1-4	PLC	040121	
HD0025A	1	Datascan	990602		KA3068A	1	PLC	040121	
KA1061A	1	HM+BorreT			KA3105A	1-4	BorreT	950310	
KA1131B	1	HM+BorreT				5	BorreT	991103	
KA1751A	1-3	HM+BorreT	940426		KA3110A	1	BorreT	950310	
KA1754A	1-2	HM+BorreT	941025			2	BorreT	991103	
KA1755A	1-4	HM+BorreT	940503		KA3385A	1-2	Datascan	970701	
KA2048B	1-4	HM+BorreT			KA3386A01	1	Datascan	030415	
KA2050A	1-3	HM+BorreT				2-3	Datascan	051205	
KA2162B	1-4	HM+BorreT			KA3510A	1-3	Datascan	981027	
KA2511A	1-6	Datascan	970701			4-5	Datascan	010518	
	7-8	Datascan	990316		KA3539G	1-4	Datascan	030508	
KA2563A	1-5	Datascan	961120		KA3542G01	1-5	Datascan	030508	
KA2598A	1	Datascan	990512		KA3542G02	1-5	Datascan	030508	

Borehole	Sect. no	Equipment	Date		Borehole	Sect. no	Equipment	Date	
			from	to				from	to
KA3543A01	1	Datascan	030508		KA3579D01	1	Datascan	010920	
KA3543I01	1	Datascan	030508		KA3579G	1-3	Datascan	011217	
KA3544G01	1-3	Datascan	030508		KA3584G01	1-2	Datascan	010918	
KA3546G01	1-3	Datascan	030508		KA3588C01	1	Datascan	011101	
KA3548A01	1-4	Datascan	030508		KA3588D01	1	Datascan	011219	
KA3548D01	1	Datascan	030508		KA3588I01	1	Datascan	011101	
KA3548G01	1-2	Datascan	030508		KA3590G01	1-3	Datascan	011217	
KA3550G01	1-3	Datascan	030508		KA3590G02	1-4	Datascan	011217	
KA3550G05	1	Datascan	030508		KA3592C01	1	Datascan	011219	
KA3551G05	1	Datascan	030508		KA3593G	1-4	Datascan	011015	
KA3552A01	1	Datascan	030508		KA3597D01	1	Datascan	010918	
KA3552G01	1-3	Datascan	030508		KA3597H01	1	Datascan	011015	
KA3552H01	1	Datascan	030508		KA3600F	1-4	Datascan	011015	
KA3553B01	1	Datascan	030508		KF0051A01	1-4	Datascan	980612	
KA3554G01	1-5	Datascan	030508		KF0069A01	1	Datascan	030417	
KA3554G02	1-5	Datascan	030508		KG0021A01	1-5	Datascan	010530	
KA3557G	1-2	Datascan	030508		KG0048A01	1-5	Datascan	010529	
KA3563A01	1	Datascan	011219		KI0023B	1-9	Datascan	980216	
KA3563D01	1	Datascan	011219		KI0025F	1-6	Datascan	970710	
KA3563G	1-4	Datascan	011219		KI0025F02	1-10	Datascan	981027	
KA3563I01	1	Datascan	010921		KI0025F03	1-9	Datascan	991013	
KA3566C01	1	Datascan	011114		KR0012B	1	BorreT	011115	
KA3566G01	1-5	Datascan	011217		KR0013B	1	BorreT	011115	
KA3566G02	1-5	Datascan	011217		KR0015B	1	BorreT	011115	
KA3568D01	1	Datascan	010926		KXTT1	1-4	Datascan	011024	
KA3572G01	1-2	Datascan	011217		KXTT2	1-5	Datascan	011024	
KA3573A	1-5	Datascan	011217		KXTT3	1-4	Datascan	011024	051026
KA3573C01	1	Datascan	011219			3-5	Datascan	051027	
KA3574D01	1	Datascan	011219		KXTT4	1-5	Datascan	011024	051026
KA3574G01	1-3	Datascan	011217			3-5	Datascan	051027	
KA3576G01	1-3	Datascan	010918		KXTT5	1-4	Datascan	011024	
KA3578C01	1	Datascan	011106		SA2142A	1	HM+BorreT		
KA3578G01	1-2	Datascan	010918		SA2338A	1	HM+BorreT		
KA3578H01	1	Datascan	011219		SA3045A	1-3	PLC	040121	

* HM=Hydraulic Multiplexer

3.2 Groundwater level measurements in surface boreholes

3.2.1 Monitoring in surface boreholes

In Table 3-3, lengths along the borehole to top and bottom of each section as well as elevation of the top of section is presented. If no end date is given, the borehole was equipped in the same way at the end of 2005. However, the period when some of the boreholes were open to enable re-instrumentation (summer 1991) is not included in the table.

Table 3-3 Monitored sections in surface boreholes.

Borehole	Section no	Section installed		Borehole length		Elevation of section	
		from	to	from (m)	to (m)	at top (masl)	at middle (masl)
HAS01	1	1988-08-01		0	100	6.38	-37.41
HAS02	1	1995-08-25		0	93	2.11	-36.87
HAS03	1	1997-02-05		0	100	2.36	-39.41
HAS04	1	2000-11-23		101	201	-83.61	-129.99
	2	2000-11-23		0	100	6.26	-37.79
HAS05	1	1993-03-31		0	100	6.31	-36.70
HAS06	<i>1</i>	<i>2003-09-23</i>		<i>0</i>	<i>100</i>	<i>4.80</i>	<i>-45.12</i>
HAS07	1	1997-02-18		0	100	3.76	-41.45
HAS08	1	1997-01-30		0	125	6.62	-48.20
HAS09	1	1995-08-14		0	125	7.84	-47.69
HAS10	1	1995-08-14		0	125	6.35	-49.32
HAS11	<i>1</i>	<i>2003-05-21</i>		<i>0</i>	<i>125</i>	<i>5.59</i>	<i>-56.81</i>
HAS12	1	1995-08-15		0	125	2.88	-52.78
HAS13	<i>1</i>	<i>2003-05-21</i>		<i>0</i>	<i>100</i>	<i>2.05</i>	<i>-42.01</i>
HAS14	1	1995-08-14		0	100	1.67	-48.30
HAS15	1	2001-05-15		0	120	4.19	-47.77
HAS16	<i>1</i>	<i>2003-09-23</i>		<i>0</i>	<i>120</i>	<i>4.36</i>	<i>-47.60</i>
HAS17	1	1999-02-24	2005-04-19	88	120	-68.32	-82.18
	2	1999-02-24	2005-04-19	0	87	7.89	-29.78
	<i>1</i>	<i>2005-04-19</i>		<i>0</i>	<i>120</i>	<i>7.89</i>	<i>-44.07</i>
HAS18	1	1997-02-27		0	150	7.54	-59.72
HAS19	1	1990-06-10	2005-04-19	61	150	-43.30	-82.66
	2	1990-06-10	2005-04-19	0	60	8.97	-16.47
	<i>1</i>	<i>2005-04-19</i>		<i>0</i>	<i>150</i>	<i>8.97</i>	<i>-55.65</i>
HAS20	<i>1</i>	<i>2003-07-03</i>		<i>0</i>	<i>150</i>	<i>6.24</i>	<i>-57.68</i>
HAS21	1	1997-01-30		0	148	3.04	-60.98
HAV01	1	2000-09-17		0	175	9.30	-77.85
HAV03	1	2000-09-17		0	134	9.2	-57.75
HAV04	1	2000-09-17		0	100	7.99	-35.75
HAV08	1	1987-09-05		0	63	7.08	-20.74
HBH01	<i>1</i>	<i>2003-09-17</i>		<i>0</i>	<i>50.6</i>	<i>4.74</i>	<i>-17.13</i>
HBH02	<i>1</i>	<i>2003-09-17</i>		<i>0</i>	<i>32.4</i>	<i>4.71</i>	<i>-7.32</i>
HBH04	1	1991-04-04		31	90.4	-21.25	-46.66
	2	1991-04-04		0	30	5.55	-7.42
HLX01	1	2000-09-17	2005-09-19*	0	100	8.9	-34.67
HLX02	1	2000-09-17	2005-09-19*	0	132	9.04	-48.5
HLX03	1	2000-09-17		0	100	10.45	-35.02
HLX04	1	1997-01-29		0	125	10.36	-47.98
HLX05	1	1997-01-29		0	100	15.71	-28.47
HLX06	1	2000-09-17	2005-09-19*	0	100	15.48	-27.10
HLX07	1	2000-09-17	2005-09-19*	0	100	8.61	-35.67
HMJ01	1	1991-12-13		33	46	-26.28	-31.65
	2	1991-12-13		0	32	1.39	-12.14
KAS03	1	1996-04-27		627	1002	-613.37	-798.89
	2	1996-04-27		533	626	-520.23	-566.30
	3	1996-04-27		377	532	-365.46	-442.37
	4	1996-04-27		253	376	-242.42	-303.44
	5	1996-04-27		107	252	-97.47	-169.46
	6	1996-04-27		0	106	8.79	-43.85
KAS04	1	1993-06-04		0	480.98	11.66	-193.58
KAS07	1	1997-02-20		0	603.75	4.58	-253.38

Borehole	Section no	Section installed from to	Borehole length		Elevation of section	
			from (m)	to (m)	at top (masl)	at middle (masl)
KAS09	1	1990-04-09	261	450	-220.08	-301.03
	2	1990-04-09	241	260	-202.93	-211.08
	3	1990-04-09	151	240	-125.97	-163.99
	4	1990-04-09	116	150	-96.01	-110.58
	5	1990-04-09	0	115	4.08	-45.66
KAS10	1	1989-10-23	0	99.93	3.72	-39.55
KAS11	1	1995-10-23	0	248.9	4.22	-120.21
KAS14	1	1995-10-24	0	211.85	3.35	-87.81
KAS16	1	1992-10-20	466	548.46	-452.91	-492.42
	2	1992-10-20	390	465	-379.59	-415.84
	3	1992-10-20	121	389	-116.36	-248.22
	4	1992-10-20	0	120	3.66	-55.96
KBH02	3	1991-09-19	261	326	-109.39	-117.28
	4	1991-09-19	151	260	-79.57	-95.01
	5	1991-09-19	106	150	-61.26	-71.05
	6	1991-09-19	0	105	5.53	-29.92

Note - Data not relevant for 2005 is to be found in earlier annual reports.

*=The Oskarshamn site investigation is after this responsible for registration in the borehole.

Italics=This information is not found in the Sicada database or the information is questioned.

3.2.2 Absolute pressure in borehole sections

Sometimes it is of interest to determine the absolute pressure at the top of a packed off section. This value can be calculated if the vertical distance from top of section to the water level in the tube connecting the section with the ground surface and the density of water in the tube are known.

The altitude at top of section is presented in Table 3-3.

Density

The density of the tube water is determined in the following way. When all packers in a core borehole are installed and inflated, water is flushed from all sections to the ground surface through the tubes. When at least two tube volumes have been discharged, a water sample from each tube is collected. The electrical conductivity of the sample is measured. On approximately 75 samples from 1988 and 1989, the density was laboratory-determined. The electrical conductivity of the samples ranged from 60 to 3400 mS/m. From these measurements a first degree equation is set up, by means of the least square method (by Ann-Chatrin Nilsson, KTH, 1990), which gives the density from the electrical conductivity (see note in Table 3-4). This equation is then used to calculate the density of any sample. The deviation from the straight line for a single value is at most 1.5 kg/m³, but normally less than 0.5 kg/m³.

A more difficult problem is to determine whether the water sample is representative for the water in the tube or not. For example, water with a different density than the sample might have entered into a part of the tube when the flushing was interrupted.

Considering even this possibility, the maximum error in the density is estimated to be ± 10 kg/m³, corresponding to ± 1 m per 100 m water column.

Calculated density values in the tubes and measured electrical conductivity values are found in Table 3-4. Measurements of the electrical conductivity in water samples were performed only in the core boreholes on Äspö, in KBH02 and in KLX01, beginning in 1988.

The values may differ from undisturbed values in the section. For example, if the sample was taken immediately after inflation of the packers, the electrical conductivity in the section may not have reached its natural value.

It can be mentioned that the electrical conductivity of the sea surface water east of Ävrö in August and September 1986 was 1180 and 1170 mS/m, respectively.

Table 3-4 Electrical conductivity and calculated density (at 25° C) of water in tubes between section and ground.

Borehole	Sec.	Valid from	Electrical conduct. (mS/m)	Density (kg/m ³)
KAS03	1	1997-05-30	1805	1006
	2	2004-09-29	1660	1005
	2	2005-10-06	824	1001
	3	1997-06-18	1790	1006
	4	1996-05-22	352	999
	5	2004-09-27	803	1001
	5	2005-10-03	317	999
	6	1996-05-22	47	998
	KAS09	1	1990-04-07	1600
2		1990-04-07	1600	1005
3		1990-04-07	1600	1005
4		2004-09-23	877	1001
4		2005-09-27	928	1002
5		1990-04-07	1600	1005
KAS16	1	1992-10-20	1450	1004
	2	1992-10-20	1350	1004
	3	1992-10-20	800	1001
	4	1992-10-20	750	1001
KBH02	3	1992-05-14	970	1002
	4	1992-05-14	1090	1002
	5	1992-05-14	870	1001
	6	1992-05-14	530	1000

Density (kg/m³) = 997.3 + 0.00467 × Electrical conductivity (mS/m).

Note - Data not relevant for 2005 is to be found in earlier annual reports.

3.2.3 Calibration method

To calibrate the registrations from the data loggers, manual levelling of all sections is made, normally once every month.

The logger data is converted to water levels by means of a linear calibration equation (if the pressure transducer is of the absolute type, subtracting the air pressure is also necessary). Converted logger data are compared with manual levellings, corrected to account for borehole deviation. If the two differs, calibration constants are changed and the procedure is repeated until an acceptable fit is achieved.

3.3 Groundwater pressure in tunnel boreholes

3.3.1 Monitoring in tunnel boreholes

In Table 3-5 the length along the boreholes to top and bottom of each section and the elevation at the middle of section is presented. To enable calculations of absolute pressure at the middle of section, the level of the pressure transducer is also given.

Table 3-5 Monitored sections in tunnel boreholes.

Borehole	Section no	Section installed		Borehole length		Elevation of		
		from	to	from (m)	to (m)	SecTop (masl)	SecMid (masl)	Transducer (masl)
HA1273A	1	1992-03-12		0	23	-174.23	-172.10	-163.34
HA1278A	1	1992-09-10		0	29	-175.68	-174.59	-163.34
HA1279A	1	1992-09-10		0	24	-175.65	-175.06	-163.34
HA1283B	1	1992-04-15		0	40.2	-176.55	-179.35	-163.34
HA1327B	1	1992-09-11		0	29.5	-182.81	-182.93	-163.34
HA1330B	1	1992-09-11		6	32.5	-183.04	-183.15	-163.34
HA1960A	1	1993-01-21		4	32	-264.22	-265.92	-289.19
HD0025A	1	1999-06-02		0	15	-416.70	-415.79	-416.42
KA1061A	1	1992-01-14		0	208.5	-144.93	-144.01	-163.34
KA1131B	1	1992-02-02		0	203.1	-155.30	-178.88	-163.34
KA1751A	1	1994-04-21		99	150	-246.10	-248.20	-224.28
	2	1994-04-21		56	98	-242.50	-244.23	-224.28
	3	1994-04-21		6	55	-238.10	-240.25	-224.28
KA1754A	1	1994-04-21		75	159.87	-270.76	-289.21	-224.28
	2	1994-04-21		6	74	-240.49	-255.48	-224.28
KA1755A	1	1994-05-03		231	320.58	-318.23	-334.61	-224.28
	2	1994-05-03		161	230	-293.11	-305.47	-224.28
	3	1994-05-03		88	160	-267.53	-279.92	-224.28
	4	1994-05-03		6	87	-239.83	-253.50	-224.28
KA2048B	1	1994-12-12		149.5	184.45	-302.36	-305.35	-289.19
	2	1994-12-12		100	148.5	-293.69	-297.97	-289.19
	3	1994-12-12		50.5	99	-284.73	-289.16	-289.19
	4	1994-12-12		5	49.5	-276.35	-280.46	-289.19
KA2050A	1	1994-04-14		155	211.57	-400.25	-422.84	-289.19
	2	1994-04-14		102	154	-357.81	-378.65	-289.19
	3	1994-04-14		6	101	-280.61	-318.81	-289.19
KA2162B	1	1994-04-15		201.5	288.1	-342.47	-353.24	-289.19
	2	1994-04-15		143.0	200.5	-327.48	-334.87	-289.19
	3	1994-04-15		80.5	142.0	-311.17	-319.19	-289.19
	4	1994-04-15		40.0	79.5	-300.49	-305.70	-289.19
KA2511A	1	1999-03-16		239.0	293	-467.14	-481.94	-335.20
	2	1999-03-16		171.0	238.0	-429.93	-448.25	-335.20
	3	1999-03-16		139.0	170.0	-412.40	-420.90	-335.20
	4	1999-03-16		111.0	138.0	-397.01	-404.44	-335.20
	5	1999-03-16		103.0	110.0	-392.62	-394.54	-335.20
	6	1999-03-16		96.0	102.0	-388.77	-390.42	-335.20
	7	1999-03-16		65.0	95.0	-371.67	-379.95	-335.20
	8	1999-03-16		6.0	64.0	-339.17	-355.13	-335.43

Borehole	Section no	Section installed		Borehole length		Elevation of		
		from	to	from (m)	to (m)	SecTop (masl)	SecMid (masl)	Transducer (masl)
KA2563A	1	1999-03-15		242.0	246.0	-501.36	-502.65	-335.43
	2	1999-03-15		236.0	241.0	-497.48	-499.10	-335.43
	3	1999-03-15		206.0	208.0	-478.00	-478.65	-335.43
	4	1999-03-15		187.0	190.0	-465.58	-466.56	-335.43
	5	1999-03-15		146.0	186.0	-438.64	-451.81	-335.43
KA2598A	1	1999-05-12		0	300.77	-342.39	-421.96	-334.69
KA2858A	2	1995-02-23		39.77	40.77	-382.34	-382.37	-399.00
KA2862A	1	2002-03-22		0	15.98	-379.54	-380.66	-399.00
KA3005A	2	1995-12-07		46.78	50.03	-403.52	-403.64	-399.67
	3	1995-12-07		44.78	45.78	-403.37	-403.41	-399.67
	4	1995-12-07		39.03	43.78	-402.94	-403.12	-399.67
	5	1995-12-07		6.53	38.03	-400.38	-401.64	-399.67
	KA3010A	2	1995-02-23		8.56	15.06	-400.58	-400.86
KA3065A02	1	2000-09-05		21.00	69.95	-410.06	-412.42	-407.89
	2	2000-09-05		14.00	20.00	-409.46	-409.72	-407.89
	3	2000-09-05		7.50	13.00	-408.90	-409.14	-407.89
	4	2000-09-05		4.00	6.50	-408.59	-408.71	-407.89
KA3065A03	1	2002-06-28		10.74	11.23	-408.90	-408.92	-408.19
	2	2002-06-28		10.39	10.73	-408.89	-408.90	-407.89
	3	2002-06-28		8.98	10.23	-408.80	-408.85	-407.89
	4	2002-06-28		4.26	7.98	-408.43	-408.58	-407.89
	5	2002-06-28		0.00	3.26	-408.09	-408.22	-407.89
KA3067A	1	2004-01-21		34.55	40.05	-411.50	-411.74	-407.59
	2	2004-01-21		30.55	33.55	-411.16	-411.29	-407.59
	3	2004-01-21		28.05	29.55	-410.95	-411.01	-407.59
	4	2004-01-21		6.55	27.05	-409.14	-410.00	-407.59
KA3068A	1	2001-11-22		0	16.85	-408.38	-407.97	-407.59
KA3105A	1	1995-03-01		53.01	68.95	-418.09	-418.81	-413.14
	2	1995-03-01		25.51	52.01	-415.78	-416.87	-413.14
	3	1995-03-01		22.15	24.51	-415.54	-415.62	-413.14
	4	1995-03-01		17.01	19.51	-415.09	-415.19	-413.14
	5	1995-03-01		6.51	16.01	-414.21	-414.61	-413.14
KA3110A	1	1995-02-23		20.05	26.83	-415.61	-415.94	-413.14
	2	1995-02-23		6.55	19.05	-414.32	-414.91	-413.14
KA3385A	1	1995-03-02		32.05	34.18	-448.74	-448.83	-416.42
	2	1995-03-02		7.05	31.05	-446.61	-447.62	-416.42
KA3386A01	1	2002-09-02	2005-12-05	0	65.11	-446.11	-447.27	?
	1	2005-12-05		34.12	65.11	-447.34	-447.99	-446.08
	2	2005-12-05		15.62	33.12	-446.63	-446.95	-446.08
KA3510A	3	2005-12-05		2.12	14.62	-446.18	-446.39	-446.07
	1	2001-05-08		125	150.06	-511.24	-517.48	-447.96
	2	2001-05-08		110	124	-503.77	-507.26	-447.96
	3	2001-05-08		75	109	-486.30	-494.79	-447.96
	4	2001-05-08		51	74	-474.28	-480.04	-447.54
KA3539G	5	2001-05-08		4.5	50	-450.96	-462.38	-447.54
	1	2002-12-03		18.6	30	-467.53	-473.16	-446.93
	2	2002-12-03		15.85	17.6	-464.82	-465.68	-446.71
	3	2002-12-03		10	14.85	-459.05	-461.44	-446.50
	4	2002-12-03		4	9	-453.14	-455.6	-446.29

Borehole	Section no	Section installed		Borehole length		Elevation of		
		from	to	from (m)	to (m)	SecTop (masl)	SecMid (masl)	Transducer (masl)
KA3542G01	1	2002-11-13		27	30	-468.15	-469.21	-446.92
	2	2002-11-13		21.3	26	-464.12	-465.78	-446.71
	3	2002-11-13		18.6	20.3	-462.22	-462.82	-446.50
	4	2002-11-13		10.5	17.6	-456.49	-459.0	-446.29
	5	2002-11-13		3.5	9.5	-451.55	-453.67	-446.07
KA3542G02	1	2002-11-20		28.2	30.01	-468.73	-469.36	-446.92
	2	2002-11-20		25.6	27.2	-466.92	-467.48	-446.71
	3	2002-11-20		21.5	24.6	-464.06	-465.14	-446.50
	4	2002-11-20		9	20.5	-455.35	-459.36	-446.29
	5	2002-11-20		2.8	8	-451.02	-452.84	-446.07
KA3543A01	1	2002-01-30		0.65	2.06	-446.81	-446.82	-445.42
KA3543I01	1	2002-01-30		0.65	2.06	-443.47	-442.81	-445.64
KA3544G01	1	2002-11-12		11.65	12	-460.6	-460.78	-446.07
	2	2002-11-12		8.9	10.65	-457.85	-458.73	-445.86
	3	2002-11-12		3.5	7.7	-452.45	-454.55	-445.65
KA3546G01	1	2002-11-07		9.3	12	-458.19	-459.54	-446.92
	2	2002-11-07		6.75	8.3	-455.64	-456.42	-446.71
	3	2002-11-07		1.5	5.75	-450.39	-452.52	-446.50
KA3548A01	1	2002-11-28		21.5	30	-447.74	-447.97	-446.92
	2	2002-11-28		11.75	20.5	-447.21	-447.45	-446.70
	3	2002-11-28		8.8	10.75	-447.05	-447.11	-446.49
	4	2002-11-28		3	7.8	-446.74	-446.87	-446.28
KA3548D01	1	2002-01-30		0.65	2.06	-445.83	-445.8	-445.43
KA3548G01	1	2002-01-29		6	12	-455	-458	-445.85
	2	2002-01-29		2	5	-451	-452.5	-445.64
KA3550G01	1	2002-11-06		8.3	12.03	-457.07	-458.93	-445.85
	2	2002-11-06		2	7.3	-450.77	-453.42	-445.64
	3	2002-11-06		1.8	4.2	-450.57	-451.77	-445.43
KA3550G05	1	2002-01-29		1.5	3	-450.46	-451.21	-446.07
KA3551G05	1	2002-01-29		1.5	3.1	-450.41	-451.21	-446.28
KA3552A01	1	2002-01-30		0.65	2.06	-446.65	-446.69	-445.64
KA3552G01	1	2002 ?		7.05	12.01	-455.82	-458.30	-446.92
	2	2002 ?		4.35	6.05	-453.12	-453.97	-446.70
	3	2002 ?		1.5	3.35	-450.27	-451.20	-446.49
KA3552H01	1	2002 ?		0	2.1	-443.98	-443.09	-445.63
KA3553B01	1	2002-01-30		0.65	2.02	-446.95	-447.37	-445.43
KA3554G01	1	2002-11-27		25.15	30.01	-466.63	-468.35	-446.92
	2	2002-11-27		22.6	24.15	-464.82	-465.37	-446.70
	3	2002-11-27		14	21.6	-458.74	-461.43	-446.49
	4	2002-11-27		5	13	-452.37	-455.2	-446.28
	5	2002-11-27		1.5	4	-449.9	-450.78	-446.07
KA3554G02	1	2002-11-25		22	30.01	-464.37	-467.21	-446.92
	2	2002-11-25		15.9	21	-460.06	-461.86	-446.70
	3	2002-11-25		13.2	14.9	-458.15	-458.75	-446.50
	4	2002-11-25		10.5	12.2	-456.24	-456.84	-446.28
	5	2002-11-25		1.5	9.5	-449.88	-452.71	-446.07
KA3557G	1	2002-01-29		15	30.04	-463.68	-471.12	-446.92
	2	2002-01-29		1.5	14	-450.33	-456.51	-446.70
KA3563A01	1	2001-04-02		0.65	2.06	-447.15	-447.24	-445.49
KA3563D01	1	2001-04-02		0.65	2.00	-446.13	-446.10	-445.49

Borehole	Section no	Section installed		Borehole length		Elevation of		
		from	to	from (m)	to (m)	SecTop (masl)	SecMid (masl)	Transducer (masl)
KA3563G	1	2001-03-27		15.0	30.0	-463.46	-470.85	-445.93
	2	2001-03-27		10.0	13.0	-458.54	-460.02	-445.72
	3	2001-03-27		4.0	8.0	-452.63	-454.60	-445.94
	4	2001-03-27		1.5	3.0	-450.17	-450.91	-445.72
KA3563I01	1	2001-04-03		0.65	2.15	-443.02	-442.30	-455.70
KA3566C01	1	2001-04-02		0.65	2.10	-445.52	-445.48	-445.92
KA3566G01	1	2001-03-20		23.5	30.1	-465.14	-467.44	-447.00
	2	2001-03-20		20.0	21.5	-462.68	-463.20	-446.78
	3	2001-03-20		12.0	18.0	-457.03	-459.15	-446.57
	4	2001-03-20		7.3	10.0	-453.72	-454.67	-446.36
	5	2001-03-20		1.5	6.3	-449.62	-451.32	-446.14
KA3566G02	1	2001-03-20		19.0	30.01	-461.72	-465.53	-446.56
	2	2001-03-20		16.0	18.0	-459.64	-460.34	-446.35
	3	2001-03-20		12.0	14.0	-456.87	-457.57	-446.14
	4	2001-03-20		8.0	11.0	-454.11	-455.14	-445.93
	5	2001-03-20		1.5	6.0	-449.61	-451.16	-445.71
KA3568D01	1	2001-04-02		0.65	2.3	-445.86	-445.89	-445.49
KA3572G01	1	2001-03-21		7.3	12.00	-455.81	-458.16	-446.99
	2	2001-03-21		2.7	5.3	-451.21	-452.51	-446.78
KA3573A	1	2001-03-29		26.0	40.07	-447.03	-447.29	-446.35
	2	2001-03-29		21.0	24.0	-446.84	-446.90	-446.14
	3	2001-03-29		14.5	19.0	-446.60	-446.68	-445.93
	4	2001-03-29		10.5	12.5	-446.45	-446.49	-445.71
	5	2001-03-29		3.4	8.5	-446.19	-446.28	-445.50
KA3573C01	1	2001-04-02		0.65	2.05	-444.76	-444.36	-445.71
KA3574D01	1	2001-04-02		0.65	2.05	-444.98	-444.83	-445.92
KA3574G01	1	2001-03-07		8.0	12.00	-456.33	-458.33	-446.99
	2	2001-03-07		5.1	7.0	-453.43	-454.38	-446.78
	3	2001-03-07		1.8	4.1	-450.13	-451.28	-446.56
KA3576G01	1	2001-03-07		7.87	12.01	-456.14	-458.21	-446.56
	2	2001-03-07		3.87	5.87	-452.14	-453.14	-446.34
	3	2001-03-07		1.37	2.87	-449.64	-450.39	-446.13
KA3578C01	1	2001-04-03		0.65	2.09	-445.4	-445.47	-445.49
KA3578G01	1	2001-03-08		6.5	12.58	-454.88	-457.92	-446.98
	2	2001-03-08		4.3	5.5	-452.68	-453.28	-446.77
KA3578H01	1	2001-04-03		0.65	1.9	-442.82	-442.28	-445.70
KA3579D01	1	2001-04-03		0.65	2.0	-445.44	-445.45	-445.91
KA3579G	1	2001-03-08		14.7	22.65	-463.07	-467.04	-446.56
	2	2001-03-08		12.5	13.7	-460.87	-461.47	-446.35
	3	2001-03-08		2.5	11.5	-450.87	-455.37	-446.13
KA3584G01	1	2001-03-19		7	12.00	-455.25	-457.75	-446.98
	2	2001-03-19		1.4	5	-449.65	-451.45	-446.77
KA3588C01	1	2001-04-03		0.65	2.04	-445.49	-445.54	-445.49
KA3588D01	1	2001-04-03		0.65	1.9	-445.26	-445.28	-445.70
KA3588I01	1	2001-04-03		0.65	1.96	-442.75	-442.15	-445.91
KA3590G01	1	2001-02-28		16	30.06	-459.26	-464.18	-446.98
	2	2001-02-28		7	15	-452.96	-455.76	-446.78
	3	2001-02-28		1.5	6	-449.11	-450.69	-446.56

Borehole	Section no	Section installed from to	Borehole length		Elevation of		
			from (m)	to (m)	SecTop (masl)	SecMid (masl)	Transducer (masl)
KA3590G02	1	2001-03-06	25.65	30.05	-465.84	-467.36	-446.98
	2	2001-03-06	15.35	23.65	-458.71	-461.58	-446.77
	3	2001-03-06	12.05	13.35	-456.42	-456.87	-446.55
	4	2001-03-06	1.65	10.05	-449.22	-452.13	-446.34
KA3592C01	1	2001-04-03	0.63	2.1	-445.2	-445.15	-445.49
KA3593G	1	2001-02-27	25.2	30.02	-472.88	-475.25	-446.98
	2	2001-02-27	23.5	24.2	-471.21	-471.55	-446.76
	3	2001-02-27	9	22.5	-456.93	-463.58	-446.55
	4	2001-02-27	3	7	-451.03	-452.99	-446.34
KA3597D01	1	2001-04-03	0.65	2.22	-445.06	-445.02	-445.70
KA3597H01	1	2001-04-03	0.65	2.06	-442.64	-442.07	-445.91
KA3600F	1	2001-03-28	43	50.1	-446.86	-446.96	-446.98
	2	2001-03-28	40.5	42	-446.79	-446.81	-446.76
	3	2001-03-28	20	39.5	-446.18	-446.47	-446.55
	4	2001-03-28	3.4	18	-445.69	-445.91	-446.34
KF0051A01	1	2003-02-13	9.65	11.7	-446.57	-446.06	-452.23
	2	2003-02-13	7.95	8.65	-447.42	-447.24	-452.23
	3	2003-02-13	5.36	6.95	-448.71	-448.31	-452.23
	4	2003-02-13	3.76	4.36	-449.51	-449.36	-452.23
KF0069A01	1	2002-05-21	0	70.09	-454.82	-455.98	?
KG0021A01	1	2001-05-30	42.5	48.81	-432.25	-431.29	-447.00
	2	2001-05-30	37	41.5	-433.92	-433.24	-446.79
	3	2001-05-30	35	36	-434.53	-434.38	-446.58
	4	2001-05-30	19	34	-439.39	-437.11	-446.36
	5	2001-05-30	5.0	18	-443.64	-441.67	-446.15
KG0048A01	1	2001-05-29	49.0	54.69	-432.63	-431.95	-447.00
	2	2001-05-29	34.8	48.0	-436.07	-434.47	-446.79
	3	2001-05-29	32.8	33.8	-436.55	-436.43	-446.58
	4	2001-05-29	13.0	31.8	-441.34	-439.07	-446.36
	5	2001-05-29	5.0	12.0	-443.27	-442.43	-446.15
KI0023B	1	1998-02-12	113.70	200.71	-488.30	-503.59	-448.21
	2	1998-02-12	111.25	112.70	-487.43	-487.69	-447.96
	3	1998-02-12	87.20	110.25	-478.84	-482.97	-447.96
	4	1998-02-12	84.75	86.20	-477.96	-478.22	-447.96
	5	1998-02-12	72.95	83.75	-473.73	-475.67	-447.96
	6	1998-02-12	70.95	71.95	-473.01	-473.19	-447.96
	7	1998-02-12	43.45	69.95	-463.15	-467.89	-447.96
	8	1998-02-12	41.45	42.45	-462.43	-462.61	-447.96
	9	1998-02-12	4.60	40.45	-449.32	-455.68	-447.96
KI0025F	1	1999-07-29	170.5	193.8	-502.58	-506.04	-448.21
	2	1999-07-29	165.5	169.5	-501.08	-501.68	-448.21
	3	1999-07-29	90.5	164.5	-478.18	-489.62	-448.21
	4	1999-07-29	87.5	89.5	-477.24	-477.55	-448.21
	5	1999-07-29	42.5	86.5	-462.70	-469.91	-448.21
	6	1999-07-29	5.0	41.5	-449.95	-456.23	-448.21

Borehole	Section no	Section installed		Borehole length		Elevation of		
		from	to	from (m)	to (m)	SecTop (masl)	SecMid (masl)	Transducer (masl)
KI0025F02	1	2003-08-22		140.05	204.18	-506.37	-518.94	-447.35
	2	2003-08-22		135.1	139.05	-504.41	-505.20	-447.35
	3	2003-08-22		129.2	134.1	-502.07	-503.04	-447.35
	4	2003-08-22		100.25	128.2	-490.40	-496.07	-447.35
	5	2003-08-22		93.35	99.25	-487.58	-488.78	-447.35
	6	2003-08-22		78.25	92.35	-481.36	-484.26	-447.35
	7	2003-08-22		73.3	77.25	-479.31	-480.13	-447.35
	8	2003-08-22		64.0	72.3	-475.45	-477.18	-447.35
	9	2003-08-22		56.1	63.0	-472.17	-473.61	-447.35
	10	2003-08-22		3.4	55.1	-450.00	-460.97	-447.35
KI0025F03	1	2003-07-02		135.03	141.72	-513.2	-514.26	-447.96
	2	2003-07-02		129.03	134.03	-511.06	-512.25	-447.96
	3	2003-07-02		123.03	128.03	-508.2	-509.39	-447.96
	4	2003-07-02		93.53	122.03	-494.02	-500.89	-447.96
	5	2003-07-02		89.03	92.53	-491.84	-492.69	-447.96
	6	2003-07-02		75.03	88.03	-485.04	-488.2	-447.96
	7	2003-07-02		66.53	74.03	-480.89	-482.72	-447.96
	8	2003-07-02		59.53	65.53	-477.46	-478.93	-447.96
	9	2003-07-02		55.03	58.53	-475.26	-476.11	-447.96
KR0012B	1	2002-06-13		4.0	10.57	-69.13	-69.19	-69.06?
KR0013B	1	2002-06-13		6.0	16.94	-69.16	-69.26	-69.06?
KR0015B	1	2002-06-13		18.8	30.31	-69.43	-69.53	-69.06?
KXTT1	1	2001-11-22		17.00	28.76	-404.27	-408.48	-399.00
	2	2001-11-22		15.00	16.00	-402.84	-403.20	-399.00
	3	2001-11-22		7.50	11.50	-397.48	-398.91	-399.00
	4	2001-11-22		3.00	6.50	-394.26	-395.51	-399.00
KXTT2	1	2001-10-25		16.55	18.30	-404.01	-404.63	-399.00
	2	2001-10-25		14.55	15.55	-402.61	-402.96	-399.00
	3	2001-10-25		11.55	13.55	-400.51	-401.21	-399.00
	4	2001-10-25		7.55	10.55	-397.72	-398.77	-399.00
	5	2001-10-25		3.05	6.55	-394.56	-395.79	-399.00
KXTT3	1	2001-10-25	2005-10-24	15.42	17.43	-400.33	-400.93	-399.67
	2	2001-10-25	2005-10-24	12.42	14.42	-398.53	-399.13	-399.67
	3	2001-10-25	2005-10-24	8.92	11.42	-396.43	-397.18	-399.67
	4	2001-10-25	2005-10-24	3.17	7.92	-392.98	-394.41	-399.67
	3	2005-10-27		12.62	14.62	-398.65	-399.25	-399.67
	4	2005-10-27		8.92	11.62	-396.43	-397.24	-399.67
	5	2005-10-27		3.17	7.92	-392.98	-394.41	-399.67
KXTT4	1	2001-11-06	2005-10-25	14.92	49.31	-399.95	-410.17	-399.67
	2	2001-11-06	2005-10-25	12.92	13.92	-398.77	-399.06	-399.67
	3	2001-11-06	2005-10-25	11.92	12.42	-398.17	-398.32	-399.67
	4	2001-11-06	2005-10-25	8.42	10.92	-396.1	-396.84	-399.67
	5	2001-11-06	2005-10-25	3.17	7.42	-392.98	-394.24	-399.67
	3	2005-10-27		11.62	13.62	-398.00	-398.59	-399.67
	4	2005-10-27		8.42	10.62	-396.10	-396.75	-399.67
	5	2005-10-27		3.17	7.42	-392.98	-394.24	-399.67
KXTT5	1	2001-10-25		10.81	25.85	-393.09	-395.05	-399.67
	2	2001-10-25		9.61	9.81	-392.78	-392.81	-399.67
	3	2001-10-25		6.11	8.61	-391.88	-392.20	-399.67
	4	2001-10-25		3.11	5.11	-391.10	-391.36	-399.67

Borehole	Section no	Section installed from to	Borehole length		Elevation of		
			from (m)	to (m)	SecTop (masl)	SecMid (masl)	Transducer (masl)
SA2142A	1	1993-02-23	6	20	-288.35	-289.44	<i>-289.19</i>
SA2338A	1	1993-04-14	6	20	-313.76	-314.61	<i>-334.61</i>
SA3045A	1	2001-01-16	9.00	20.70	-407.05	-408.12	-407.59
	2	2001-01-16	6.00	8.00	-406.51	-406.69	-407.59
	3	2001-01-16	2.50	5.00	-405.87	-406.10	-407.59

Note - Data not relevant for 2005 is to be found in earlier annual reports.

Italics=This information is not found in the Sicada database or the information is questioned.

3.4 Water flow in tunnel

3.4.1 Instrumentation

For a detailed description on instrumentation, see "Manual för HMS (del 3:4), 1994".

The tunnel sections, in metres from the tunnel entrance, draining water to the different measuring ditches, are listed in Table 3-6. The tunnel drainage system is graphically presented in Figure 3-1. Normally, the gauging box is placed some 10 metres downward from the measuring ditch crossing the tunnel. Special arrangements are used to collect the water from the side tunnels containing the elevator and the ventilation shafts.

Table 3-6 Water flow measurements in tunnel segments.

Gauging box	Upper section (m)	Lower section (m)
MA0682G	0	682
MA1033G	682	1033
MA1232G	1033	1232
MA1372G	1232	1372
MA1584G	1372	1584
MA1659G	Water from the elevator shaft (TH: 0-213 m), from the ventilation shaft for incoming air (TV: 0-213 m) and from a sump inside the gate in the side tunnel at 1659 m.	
MA1745G	1584	1745
	Water from the side tunnel collected at MA1659G is not included.	
MA1883G	1745	1883
MA2028G	1883	2028
MA2178G	2028	2178
MA2357G	2178	2357
MA2496G	2357	2496
MA2587G	Water from the elevator shaft (TH: 220-333 m) and from a sump inside the gate in the side tunnel at 2587 m.	
MA2699G	2496	2699
	Water from the side tunnel collected at MA2587G is not included.	
MA2840G	2699	2840
MA2994G	2840	2994
MA3179G	2994	3179
MA3384G	Water from the elevator shaft (TH: 340-450 m), from the ventilation shaft for incoming air (TV: 220-450 m) and from the ventilation shaft for outgoing air (TW: 0-450 m)	
MA3411G	3179	3426
	Water from the side tunnel collected at MA3384G is not included.	
MA3426G	3426	3600
	Water from tunnel I and parts of tunnel J is included	
MA3515G	3515	3525
MA3525G	3525	3535
MA3535G	3535	3600
MF0061G	Water from tunnel F 0-61 m and parts of tunnel J	
MG0004G	Water from tunnel G	

Note – The water from MA3515G, MA3525G and MA3535G is collected in MA3426G.

HMS - WATER FLOW IN TUNNEL

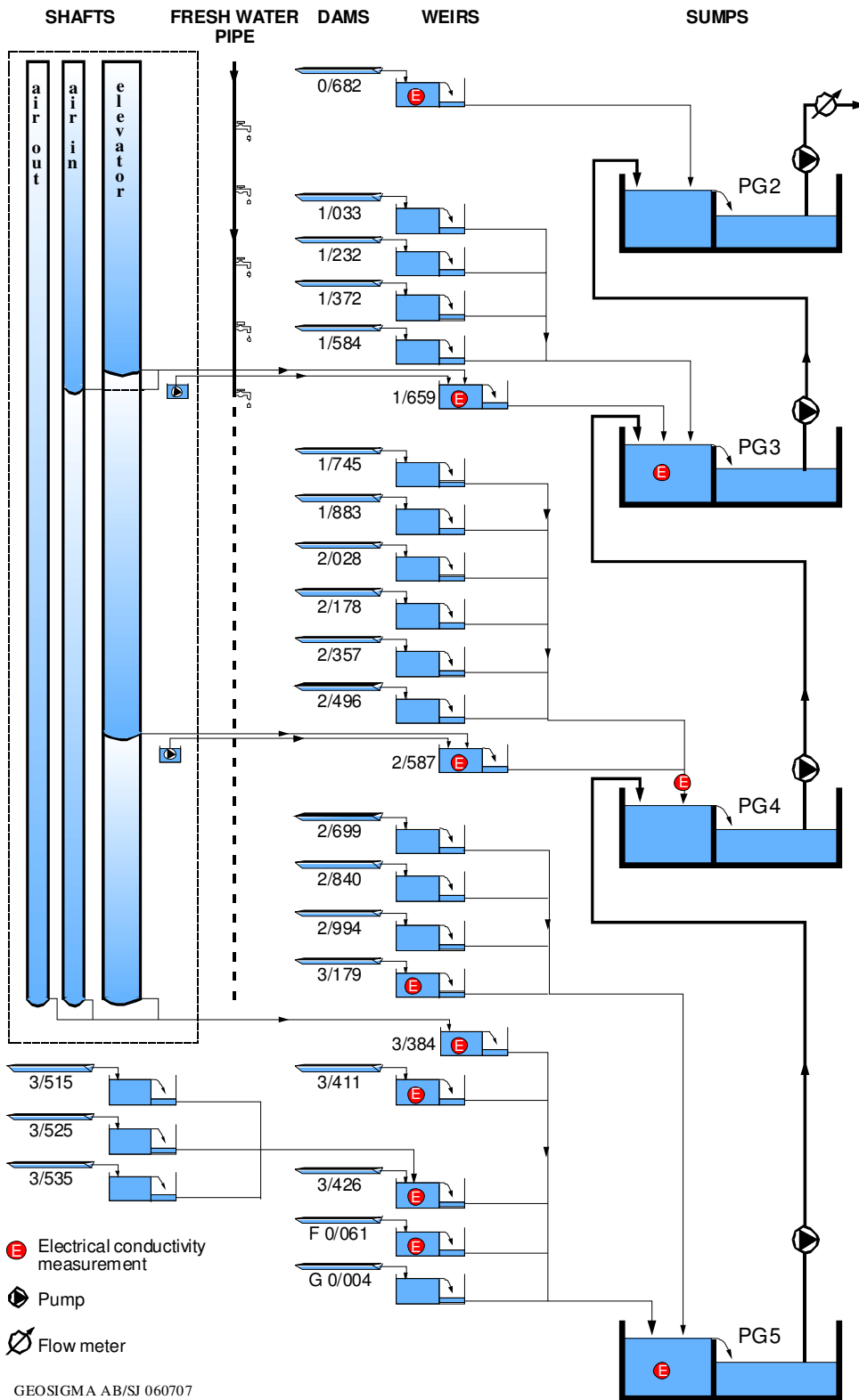


Figure 3-1 Schematic picture showing the tunnel drainage system.

3.4.2 Methodology

Water levels in the gauging boxes are used in the HMS to calculate flow rates by means of a discharge equation expressing flow rate as a function of water level. Normally, the level is scanned every 10th second but stored only every hour unless the change since the latest stored value exceeds a predefined amount (change value). The change value is usually 1 mm, but due to oscillating levels in some gauging boxes it has been necessary to increase this value to avoid sampling of too much data.

Initially, the discharge equation for a weir is determined. The flow rate is measured at four different levels on the ruler. The level indicator is then calibrated against the ruler by altering the level in the box. This two-step procedure is used to avoid a new determination of the discharge equation every time a level indicator has to be replaced and to make the discharge equation independent changes in the calibration of the transducers.

The levels in the gauging boxes are manually read once every month to enable adjustments of the calibration constants for the level indicators. Once a year, the discharge equations are checked through field measurements and, if necessary, a new discharge equation is determined (see for example Wass et al. 2005).

3.4.3 Accuracy

If the flow rate does not differ too much from within the flow rate interval the measuring points were selected to determine the calibration equation, the error is within approximately five percent.

However, maintenance of the v-notch weir is important. If there are obstacles or coatings on the weir, the relation between level and flow rate is disturbed.

3.5 Water flow in tunnel pipes

For a detailed description on instrumentation, see "Manual för HMS (del 3:4), 1994".

The flow in the pipe for pumped out drainage water is measured with an acoustic "clamp-on" type flow meter. The sensor is situated approximately 700 m from the tunnel entrance. Until 1999-06-26, the flow of incoming consumption water was measured in the same way, but after a failure in the flow meter a decision was taken not to continue these measurements.

3.5.1 Methodology

The calibration constants given by the manufacturer do not provide the required accuracy. Using material constants for different pipes is necessary and the errors caused by using wrong constants are unknown. The pipes consist of different material layers, and might be coated at the inside. Therefore, due to these uncertainties, the flow meter is calibrated by measuring level changes in the uppermost pumping sump. (There are five sumps in the tunnel and the drainage water is pumped upwards from sump to sump until it is pumped out of the tunnel).

The flow is measured at a location some 10 metres upwards the top sump. The pump in each sump is working at maximum capacity until the sump is emptied and starts again when the sump is filled to a certain level. This means that the flow rate is either zero or at the maximum capacity of the pump. The flow meter is calibrated by measuring level changes per time in the sump. Knowing the area of the sump at different levels one can calculate the discharged water.

The flow meter measures very frequently, every five seconds for discharged water, but the values are stored only if a certain change has taken place.

3.5.2 Accuracy

No systematic estimation of different errors has been performed but comparisons of the annual calibrations indicate an uncertainty of around 10 %.

3.6 Electrical conductivity of tunnel water

For a detailed description on instrumentation, see "Manual för HMS (del 3:4), 1994".

Electrical conductivity is measured with a 4-electrode conductivity meter, consisting of a housing with an electronic unit and an integrated sensor. The manufacturer gives an inaccuracy of maximum 0.5 % of the measured value plus 0.5 % of the measuring range. This gives a maximum error of 20 mS/m for most of the sensors.

The meter is mounted either in a gauging box for flow measurements, on the common discharge pipe leading water from the gauging boxes to the pumping sumps, or in a sump.

In Table 3-7, the tunnel parts from which water originates at the different measuring points are listed. Length to section is given in metres from the tunnel entrance.

Table 3-7 Electrical conductivity of water in tunnel segments.

Mearuring point	Upper section (m)	Lower section (m)
EA0682G	0	682
EA1584T	682	1584
	Water from the gauging box MA1659G is included (see below).	
EA1659B	Water from the elevator shaft (TH: 0-213 m), from the ventilation shaft for incoming air (TV: 0-220 m) and from a sump inside the gate in the side tunnel at 1659 m.	
EA2496T	1584	2496
	Water from the gauging box MA1659G (see above) is excluded and water from the gauging box MA2587G is included (see below).	
EA2587G	Water from the elevator shaft (TH: 220-333 m) and from a sump inside the gate in the side tunnel at 2587 m.	
EA3179G	2994	3179
EA3384G	Water from the elevator shaft (TH: 340-450 m), from the ventilation shaft for incoming air (TV: 220-450 m) and from the ventilation shaft for outgoing air (TW: 0-450 m).	
EA3411G	3179	3426
	Water from the gauging box MA3384G is excluded (see above).	
EA3426G	3426	3600
	Water from tunnel I and parts of tunnel J is included.	
EF0061G	Water from tunnel F 0-61 m and parts of tunnel J.	
EPG5	Water below section 2496 m, excluding the water from the gauging box MA2587G, including the water from the gauging box MA3384G (see above).	

3.6.1 Methodology

A value is measured and stored once every two hours in the HMS. The four gauging boxes MA3384G, MA3411G, MA3426G and MF0061G are all situated near the sump PG5 in the bottom part of the tunnel, and a single electrical conductivity meter is used periodically in the different boxes and the sump.

Once a year, the meters are calibrated by measuring three buffer fluids having well-defined electrical conductivity.

3.6.2 Accuracy

No careful calculations on errors have been done, but from the annual calibrations the uncertainty can be estimated to be approximately $\pm 5\%$ of measured values. This includes all types of errors, for example coatings on the sensor, drift in calibration constants, error in the electrical conductivity of the buffer solutions etc.

3.7 Meteorological data

3.7.1 Precipitation

Precipitation data is obtained from the Oskarshamn station (SMHI no 7616). The station is a regular SMHI-station, where a precipitation gauge with a wind shield (SMHI-type) is emptied at 0700 hours every day. Precipitation amounts always refer to the day before emptying the gauge.

The most important error in point measurements of precipitation is due to the wind. The wind error varies with type of precipitation, wind speed and site, but always results in a deficiency of catch. The error due to evaporation from the gauge is largest during warm summer days with showers. The loss is estimated to some 1.5 mm/month (Gottschalk, 1982) as a mean, although much depending on meteorological factors. All types of errors cause precipitation to be underestimated. For the Oskarshamn station the total correction needed have been estimated to +18 % (Eriksson, 1980) for the annual precipitation amount. All precipitation values in this report are measured values, without any corrections.

A much more difficult problem when dealing with precipitation data is the poor areal representativity of precipitation measurements, especially during showery conditions in the summer.

3.7.2 Temperature

Daily mean temperature values are obtained from the Oskarshamn station. These are, by SMHI, evaluated as a weighted mean of temperatures measured at 0700, 1300 and 1900 hours and the maximum and minimum temperatures.

Temperature is an easier variable to measure than precipitation, and the areal representativity is normally much better. Therefore, the Oskarshamn measurements some 25 km away can be regarded as good estimates of the temperature at Äspö, especially since both sites are near-coastal and at nearly the same altitude.

3.7.3 Potential Evapotranspiration

Potential evapotranspiration¹ is calculated with the Penman formula. The required meteorological data are available only at a few synoptical stations. Until the 31st of July, 1995, when the station at Ölands Norra Udde was closed, all presented values were means of potential evapotranspiration calculated for Gladhammar and Ölands Norra Udde. Furthermore, the observations of cloudiness, which are used to obtain incoming short-wave radiation in Penmans formula, were ended for Gladhammar on the 30th of June, 1995. Therefore, from the 31st of July, 1995, the potential evapotranspiration is calculated with data from Gladhammar but with cloudiness from Målilla some 50 km west of the Simpevarp area. Since the cloudiness at Målilla is greater than at the near coastal station in Gladhammar, this will result in lower calculated potential evapotranspiration.

Ölands Norra Udde and Gladhammar are situated approximately 25 and 35 km respectively from the study site.

Although actual evapotranspiration can show a rather large areal variation on the local scale, the potential evapotranspiration, depending mainly upon meteorological factors, does not vary that much. For long periods the actual evapotranspiration is almost the same as the potential, but during the summer months it does not reach the potential rate. The difference between the two very much depends upon vegetation, ground conditions and the wetness situation in an area.

¹ The theoretical evapotranspiration from a surface completely covered by a homogenous surface of green vegetation (crop) experiencing no lack of soil water.

4 Summary of activities influencing groundwater levels, pressure and flow

4.1 General

One main purpose of this report is to give an overview of the long-term effect of the tunnel excavations on the groundwater situation in the area. Therefore, activities that might influence the groundwater pressure, groundwater levels and groundwater inflow to the tunnel are presented. The character and magnitude of the disturbances are different for different activities. Some might influence the groundwater pressure/level in many surrounding boreholes while others have influence only in the borehole where the activity takes place.

During the spring of 1991, the tunnel excavation began to have a visible effect on the groundwater level in many surface boreholes, especially on Äspö and Bockholmen. Later on most boreholes, except those on Laxemar, were influenced by the tunnel activities. From late 1991, the disturbances from the tunnel had a dominating influence on the groundwater levels in the area. One particular activity affecting the groundwater levels in many boreholes on Äspö was the drilling of the first of two raise-drilled ventilation shafts to the tunnel at the end of October 1992. After this event, the groundwater levels continued to decline in many borehole sections, but nothing as spectacular as in the late 1992 has occurred. Since 1996, the levels in most surface boreholes seem to have stabilised and the changes during 2005 were relatively small (within some metre in most boreholes), mainly with decreasing levels. In the tunnel, the pressure in most borehole sections decreased about 20 - 200 kPa during 2005, but there were also sections with increasing pressure during the year.

A large number of activities, which may or may not have influenced the groundwater level/pressure and inflow to the tunnel, have been carried out during 2005. Over 4000 entries during 2005 are to be found in the activity table in the SKB database. One should also expect that there are activities influencing groundwater conditions that are missing in the database. Because of the great number of activities in the database, only a selection of activities is presented in the following tables.

The activities are listed in Tables 4-1 - 4-6. The dates stated in the tables are the dates for the actual activity. However, the influence on groundwater levels/pressures may last 5-10 times the length of the activity.

4.2 Tunnel excavation and permanent reinforcement

These activities, presented in Table 4-1, may have a substantial influence on ground water levels and pressures.

Table 4-1 Tunnel excavation and permanent reinforcements.

Start	Stop	Idcode	Secup (m)	Seclow (m)	Activity
2005-01-10	2005-01-10	TASA	1570.0	1660.0	Additional scaling
2005-01-11	2005-01-24	TASA	1130.0	1180.0	Additional scaling
2005-01-12	2005-01-12	NASA1049A			Additional scaling
2005-01-12	2005-01-12	TASA	1118.0	1170.0	Additional scaling
2005-01-13	2005-01-20	TASA	1095.0	1140.0	Additional scaling
2005-01-13	2005-01-20	TASA	1110.0	1160.0	Additional scaling
2005-01-18	2005-01-20	TASA	1080.0	1132.0	Additional scaling
2005-01-19	2005-01-19	TASA	950.0	1060.0	Additional scaling
2005-01-19	2005-01-19	TASA	1010.0	1080.0	Additional scaling
2005-01-24	2005-01-24	TASA	1140.0	1190.0	Additional scaling
2005-01-25	2005-01-25	TASA	950.0	1040.0	Additional scaling
2005-01-26	2005-01-26	NASA0907A			Additional scaling
2005-01-26	2005-01-26	TASA	920.0	970.0	Additional scaling
2005-01-27	2005-02-01	TASA	790.0	890.0	Additional scaling
2005-02-01	2005-02-03	NASA0748A			Additional scaling
2005-02-02	2005-02-02	NASA0690A			Additional scaling
2005-02-02	2005-02-02	TASA	730.0	790.0	Additional scaling
2005-02-07	2005-02-09	TASA	500.0	766.0	Additional scaling
2005-02-08	2005-02-08	TASA	1170.0	1240.0	Additional scaling
2005-02-09	2005-02-10	TASA	320.0	510.0	Additional scaling
2005-02-10	2005-02-10	TASA	300.0	486.0	Additional scaling
2005-02-21	2005-02-22	TASE	0.0	20.0	Additional scaling
2005-02-23	2005-02-23	TASD	40.0	60.0	Additional scaling
2005-02-28	2005-02-28	NASA2715A			Additional scaling
2005-03-02	2005-03-02	NASA2715A			Additional scaling
2005-03-02	2005-03-03	TASA	2460.0	2480.0	Additional scaling
2005-03-03	2005-03-03	NASA3067A			Additional scaling
2005-03-07	2005-03-07	NASA2050A			Additional scaling
2005-03-07	2005-03-07	NASA3106A			Bolting
2005-03-07	2005-03-07	TASA	3160.0	3180.0	Bolting
2005-03-08	2005-03-08	NASA2715A			Bolting
2005-03-08	2005-03-08	TASA	3040.0	3060.0	Bolting
2005-03-09	2005-03-09	NASA2050A			Bolting
2005-03-09	2005-03-09	TASA	2040.0	2060.0	Bolting
2005-03-10	2005-03-10	NASA1757A			Bolting
2005-03-10	2005-03-10	TASA	1460.0	1480.0	Bolting
2005-03-10	2005-03-10	TASA	1500.0	1520.0	Bolting
2005-03-10	2005-03-10	TASA	1540.0	1560.0	Bolting
2005-03-11	2005-03-11	TASA	1541.0	1561.0	Bolting
2005-03-14	2005-03-14	NASA1387A			Bolting
2005-03-14	2005-03-14	TASA	1400.0	1420.0	Bolting
2005-03-14	2005-03-14	TASA	1440.0	1460.0	Bolting
2005-03-15	2005-03-15	NASA1265A			Bolting
2005-03-15	2005-03-15	TASA	1220.0	1240.0	Bolting

Start	Stop	Idcode	Secup (m)	Seclow (m)	Activity
2005-03-15	2005-03-15	TASA	1260.0	1280.0	Bolting
2005-03-16	2005-03-22	NASA1049A			Bolting
2005-03-16	2005-03-16	NASA1127B			Bolting
2005-03-17	2005-03-17	TASA	1160.0	1180.0	Bolting
2005-03-17	2005-03-17	TASA	1180.0	1200.0	Bolting
2005-03-17	2005-03-17	TASQ	0.0	20.0	Additional scaling
2005-03-21	2005-03-21	NASA1194A			Bolting
2005-03-29	2005-03-29	TASA	400.0	420.0	Bolting
2005-03-29	2005-03-29	TASA	680.0	700.0	Bolting
2005-03-29	2005-03-29	TASA	800.0	820.0	Bolting
2005-03-29	2005-03-29	TASA	860.0	880.0	Bolting
2005-03-29	2005-03-29	TASA	900.0	920.0	Bolting
2005-03-30	2005-03-30	TASA	220.0	240.0	Bolting
2005-03-30	2005-03-30	TASA	260.0	280.0	Bolting
2005-03-30	2005-03-30	TASA	280.0	300.0	Bolting
2005-03-31	2005-03-31	TASA	440.0	460.0	Additional scaling
2005-04-05	2005-04-06	NASA1757A			Additional scaling
2005-04-11	2005-04-11	TASC			Additional scaling
2005-04-14	2005-04-14	NASA1757A			Additional scaling
2005-04-27	2005-04-27	NASA2514A			Bolting
2005-05-03	2005-05-04	TASA	100.0	120.0	Additional scaling
2005-05-03	2005-05-04	TASA	120.0	140.0	Additional scaling
2005-05-11	2005-05-11	TASA	40.0	60.0	Additional scaling
2005-05-11	2005-05-11	TASA	60.0	80.0	Additional scaling
2005-05-11	2005-05-11	TASA	80.0	100.0	Additional scaling
2005-05-25	2005-05-25	KA3386A02	0.50	2.92	Grouting in borehole
2005-05-25	2005-05-25	KA3386A03	0.50	2.86	Grouting in borehole
2005-05-25	2005-05-25	KA3386A04	0.50	2.89	Grouting in borehole
2005-05-25	2005-05-25	KA3386A05	0.50	2.88	Grouting in borehole
2005-05-25	2005-05-25	KA3386A06	0.50	2.89	Grouting in borehole
2005-06-01	2005-06-01	TASA	200.0	220.0	Additional scaling
2005-06-02	2005-06-02	TASA	140.0	160.0	Additional scaling
2005-06-02	2005-06-02	TASA	160.0	180.0	Additional scaling
2005-06-02	2005-06-02	TASA	180.0	200.0	Additional scaling
2005-06-07	2005-06-07	TASA	180.0	200.0	Additional scaling
2005-06-07	2005-06-07	TASA	220.0	240.0	Additional scaling
2005-06-07	2005-06-07	TASA	240.0	260.0	Additional scaling
2005-06-07	2005-06-07	TASA	260.0	280.0	Additional scaling
2005-06-07	2005-06-07	TASA	280.0	300.0	Additional scaling
2005-06-16	2005-06-16	TASA	380.0	400.0	Additional scaling
2005-06-20	2005-06-20	TASA	200.0	220.0	Additional scaling
2005-06-22	2005-06-22	TASQ	0.0	20.0	Additional scaling
2005-06-22	2005-06-22	TASQ	20.0	40.0	Additional scaling
2005-06-23	2005-06-23	TASQ	20.0	40.0	Additional scaling
2005-06-23	2005-06-23	TASQ	40.0	60.0	Additional scaling
2005-06-27	2005-06-27	TASQ	40.0	60.0	Additional scaling
2005-06-27	2005-06-27	TASQ	60.0	80.0	Additional scaling
2005-06-28	2005-06-28	TASQ	60.0	80.0	Additional scaling
2005-06-29	2005-06-29	TASQ	20.0	40.0	Additional scaling
2005-06-29	2005-06-29	TASQ	60.0	80.0	Additional scaling
2005-06-30	2005-06-30	NASA0408A			Additional scaling
2005-08-25	2005-08-25	NASA1075A			Additional scaling

Start	Stop	Idcode	Secup (m)	Seclow (m)	Activity
2005-08-29	2005-08-29	TASA	240.0	260.0	Additional scaling
2005-08-30	2005-08-30	TASA	260.0	280.0	Additional scaling
2005-08-30	2005-08-30	TASA	280.0	300.0	Additional scaling
2005-09-01	2005-09-01	TASA	300.0	320.0	Additional scaling
2005-09-01	2005-09-01	TASA	320.0	340.0	Additional scaling
2005-09-05	2005-09-05	TASA	340.0	360.0	Additional scaling
2005-09-05	2005-09-05	TASA	360.0	380.0	Additional scaling
2005-09-05	2005-09-05	TASA	380.0	400.0	Additional scaling
2005-09-06	2005-09-06	TASA	360.0	380.0	Additional scaling
2005-09-06	2005-09-06	TASA	380.0	400.0	Additional scaling
2005-09-07	2005-09-07	TASA	320.0	340.0	Additional scaling
2005-09-07	2005-09-07	TASA	340.0	360.0	Additional scaling
2005-09-08	2005-09-08	TASA	250.0	320.0	Additional scaling
2005-09-12	2005-09-12	TASA	220.0	240.0	Additional scaling
2005-09-12	2005-09-12	TASA	240.0	260.0	Additional scaling
2005-09-13	2005-09-13	TASC			Bolting
2005-09-20	2005-09-20	NASA1619A			Wire meshing
2005-10-05	2005-10-05	TASA	1620.0	1640.0	Additional scaling
2005-10-18	2005-10-20	TASA	3020.0	3040.0	Additional scaling
2005-10-18	2005-10-20	TASA	3040.0	3060.0	Additional scaling
2005-10-18	2005-10-20	TASA	3060.0	3080.0	Additional scaling
2005-10-19	2005-10-19	NASA3106A			Additional scaling
2005-10-24	2005-10-24	TASA	2860.0	2880.0	Additional scaling
2005-10-24	2005-10-24	TASA	2880.0	2900.0	Additional scaling
2005-10-25	2005-10-25	TASA	2840.0	2860.0	Additional scaling
2005-10-25	2005-10-25	TASA	2880.0	2900.0	Additional scaling
2005-10-26	2005-10-26	TASA	2840.0	2860.0	Additional scaling
2005-10-26	2005-10-26	TASA	2860.0	2880.0	Additional scaling
2005-10-27	2005-10-27	NASA2861A			Additional scaling
2005-11-07	2005-11-07	TASA	2800.0	2820.0	Additional scaling
2005-11-07	2005-11-07	TASA	2820.0	2840.0	Additional scaling
2005-11-08	2005-11-08	TASA	2760.0	2780.0	Additional scaling
2005-11-08	2005-11-08	TASA	2780.0	2800.0	Additional scaling
2005-11-09	2005-11-09	TASA	2660.0	2680.0	Additional scaling
2005-11-09	2005-11-09	TASA	2720.0	2740.0	Additional scaling
2005-11-09	2005-11-09	TASA	2740.0	2760.0	Additional scaling
2005-11-10	2005-11-10	TASA	2600.0	2620.0	Additional scaling
2005-11-10	2005-11-10	TASA	2620.0	2640.0	Additional scaling
2005-11-10	2005-11-10	TASA	2640.0	2660.0	Additional scaling
2005-11-14	2005-11-14	TASA	2780.0	2800.0	Additional scaling
2005-11-14	2005-11-14	TASA	2800.0	2820.0	Additional scaling
2005-11-14	2005-11-14	TASA	2820.0	2840.0	Additional scaling
2005-11-15	2005-11-15	TASA	2740.0	2760.0	Additional scaling
2005-11-15	2005-11-15	TASA	2760.0	2780.0	Additional scaling
2005-11-16	2005-11-16	TASA	2640.0	2660.0	Additional scaling
2005-11-16	2005-11-16	TASA	2660.0	2680.0	Additional scaling
2005-11-16	2005-11-16	TASA	2720.0	2740.0	Additional scaling
2005-11-17	2005-11-17	TASA	2600.0	2620.0	Additional scaling
2005-11-17	2005-11-17	TASA	2620.0	2640.0	Additional scaling
2005-11-21	2005-11-21	TASA	3020.0	3040.0	Additional scaling
2005-11-21	2005-11-21	TASA	3040.0	3060.0	Additional scaling
2005-11-22	2005-11-22	TASA	2900.0	2920.0	Additional scaling

Start	Stop	Idcode	Secup (m)	Seclow (m)	Activity
2005-11-22	2005-11-22	TASA	2920.0	2940.0	Additional scaling
2005-11-22	2005-11-22	TASA	2940.0	2960.0	Additional scaling
2005-11-23	2005-11-23	TASA	2960.0	2980.0	Additional scaling
2005-11-23	2005-11-23	TASA	2980.0	3000.0	Additional scaling
2005-11-24	2005-11-24	TASA	3000.0	3020.0	Additional scaling
2005-11-24	2005-11-24	TASA	3020.0	3040.0	Additional scaling
2005-11-24	2005-11-24	TASA	3040.0	3060.0	Additional scaling
2005-11-28	2005-11-29	TASA	3480.0	3500.0	Additional scaling
2005-11-30	2005-11-30	TASA	2560.0	2580.0	Additional scaling
2005-11-30	2005-11-30	TASA	2580.0	2600.0	Additional scaling

4.3 Opening of valves in tunnel boreholes

The main reason for valve openings in boreholes is water sampling for chemical analyses. Usually, before water samples are taken from a tunnel borehole section, a certain amount of water is discharged to assure that the water is representative for that section. Typically, for chemical sampling, a volume corresponding to five section volumes is discharged. When a valve is opened, the flow rate may vary a lot from section to section due to different transmissivities and pressures. Normally, this type of valve openings has only a minor influence on other boreholes. Therefore, only openings and closures in borehole sections included in the monitoring program are listed in Table 4-2, where dates when valves have been open are to be found. In some cases, due to missing data records, only start or stop date is listed. Since the opening and closing of a valve are uncoupled activities in the database it is also possible, if two successive data records are missing, that the "from" and "to" dates do not match.

Table 4-2 Open valves in tunnel boreholes.

From	To	Borehole:sec	From	To	Borehole:sec
2005-01-03	2005-01-03	HD0025A:	2005-01-24	2005-01-24	KA3542G02:5
2005-01-19	2005-01-19	KA3539G:2	2005-01-24	2005-01-24	KA3542G02:5
2005-01-19	2005-01-19	KG0021A01:3	2005-01-24	2005-01-24	KA3548A01:3
2005-01-20	2005-01-20	KA3539G:2	2005-01-24	2005-01-24	KA3554G02:4
2005-01-20	2005-01-20	KA3542G01:3	2005-01-24	2005-01-24	KA3563G:4
2005-01-20	2005-01-20	KA3548A01:3	2005-01-25	2005-01-25	KA3546G01:2
2005-01-20	2005-01-20	KA3554G01:2	2005-01-25	2005-01-25	KA3554G02:4
2005-01-21	2005-01-21	KA3542G01:3	2005-01-25	2005-01-25	KA3566G01:2
2005-01-21	2005-01-21	KA3554G01:2	2005-01-25	2005-01-26	KA3573A:4
2005-01-21	2005-01-21	KA3572G01:2	2005-01-25	2005-01-25	KA3574G01:3
2005-01-21	2005-02-03	KA3572G01:	2005-01-31	2005-01-31	HD0025A:
2005-01-21	2005-01-21	KA3590G02:1	2005-02-03	2005-03-10	KA3566G02:2
2005-01-22	2005-01-22	KA3542G01:3	2005-02-07	2005-02-07	HD0025A:
2005-01-22	2005-01-22	KA3542G02:2	2005-02-11	2005-02-11	HD0025A:
2005-01-22	2005-01-22	KA3554G01:2	2005-02-13	2005-02-13	HD0025A:
2005-01-23	2005-01-23	KA3542G02:2	2005-02-13	2005-02-13	HD0025A:
2005-01-23	2005-01-23	KA3548A01:3	2005-02-14	2005-02-14	HD0025A:
2005-01-23	2005-01-23	KA3552G01:2	2005-02-15	2005-02-15	HD0025A:
2005-01-23	2005-01-23	KG0048A01:3	2005-02-17	2005-02-17	HD0025A:

From	To	Borehole:sec	From	To	Borehole:sec
2005-02-18	2005-02-18	HD0025A:	2005-05-02	2005-05-02	HD0025A:
2005-02-19	2005-02-19	HD0025A:	2005-05-03	2005-05-03	HD0025A:
2005-02-21	2005-02-21	HD0025A:	2005-05-03	2005-05-03	HD0025A:
2005-02-22	2005-02-22	HD0025A:	2005-05-04	2005-05-04	HD0025A:
2005-02-23	2005-02-23	HD0025A:	2005-05-05	2005-05-05	HD0025A:
2005-02-24	2005-02-24	HD0025A:	2005-05-07	2005-05-07	HD0025A:
2005-02-25	2005-02-25	HD0025A:	2005-05-09	2005-05-09	HD0025A:
2005-02-27	2005-02-27	HD0025A:	2005-05-10	2005-05-10	HD0025A:
2005-02-28	2005-02-28	HD0025A:	2005-05-11	2005-05-11	HD0025A:
2005-03-01	2005-03-01	HD0025A:	2005-05-12	2005-05-12	HD0025A:
2005-03-02	2005-03-02	HD0025A:	2005-05-12	2005-05-12	HD0025A:
2005-03-04	2005-03-04	HD0025A:	2005-05-13	2005-05-13	HD0025A:
2005-03-05	2005-03-05	HD0025A:	2005-05-14	2005-05-14	HD0025A:
2005-03-07	2005-03-07	HD0025A:	2005-05-14	2005-05-14	HD0025A:
2005-03-08	2005-03-08	HD0025A:	2005-05-16	2005-05-16	HD0025A:
2005-03-10	2005-03-10	HD0025A:	2005-05-16	2005-05-16	HD0025A:
2005-03-11	2005-03-11	HD0025A:	2005-05-17	2005-05-17	HD0025A:
2005-03-13	2005-03-13	HD0025A:	2005-05-18	2005-05-18	HD0025A:
2005-03-14	2005-03-14	HD0025A:	2005-05-19	2005-05-19	HD0025A:
2005-03-16	2005-03-16	HD0025A:	2005-05-20	2005-05-20	HD0025A:
2005-03-18	2005-03-18	HD0025A:	2005-05-20	2005-05-21	HD0025A:
2005-03-20	2005-03-20	HD0025A:	2005-05-23	2005-05-23	HD0025A:
2005-03-22	2005-03-22	HD0025A:	2005-05-24	2005-05-24	HD0025A:
2005-03-23	2005-03-23	HD0025A:	2005-05-25	2005-05-25	HD0025A:
2005-03-25	2005-03-25	HD0025A:	2005-05-25	2005-05-26	KA3386A01:
2005-03-25	2005-03-25	HD0025A:	2005-05-26	2005-05-26	HD0025A:
2005-03-28	2005-03-28	HD0025A:	2005-05-26	2005-05-26	HD0025A:
2005-03-28	2005-03-28	HD0025A:	2005-05-27	2005-05-27	HD0025A:
2005-03-29	2005-03-29	HD0025A:	2005-05-30	2005-05-30	HD0025A:
2005-03-31	2005-03-31	HD0025A:	2005-06-02	2005-06-02	HD0025A:
2005-04-01	2005-04-01	HD0025A:	2005-06-03	2005-06-03	HD0025A:
2005-04-03	2005-04-03	HD0025A:	2005-06-05	2005-06-05	HD0025A:
2005-04-04	2005-04-04	HD0025A:	2005-06-07	2005-06-07	HD0025A:
2005-04-04	2005-04-04	HD0025A:	2005-06-08	2005-06-08	HD0025A:
2005-04-06	2005-04-06	HD0025A:	2005-06-08	2005-06-08	HD0025A:
2005-04-06	2005-04-06	HD0025A:	2005-06-09	2005-06-09	HD0025A:
2005-04-06	2005-04-06	HD0025A:	2005-06-10	2005-06-10	HD0025A:
2005-04-11	2005-04-11	HD0025A:	2005-06-10	2005-06-10	HD0025A:
2005-04-12	2005-04-12	HD0025A:	2005-06-10	2005-06-10	HD0025A:
2005-04-14	2005-04-14	HD0025A:	2005-06-12	2005-06-12	HD0025A:
2005-04-17	2005-04-17	HD0025A:	2005-06-13	2005-06-13	HD0025A:
2005-04-19	2005-04-19	HD0025A:	2005-06-13	2005-06-13	HD0025A:
2005-04-21	2005-04-21	HD0025A:	2005-06-15	2005-06-15	HD0025A:
2005-04-22	2005-04-22	HD0025A:	2005-06-15	2005-06-15	HD0025A:
2005-04-23	2005-04-23	HD0025A:	2005-06-16	2005-06-16	HD0025A:
2005-04-25	2005-04-25	HD0025A:	2005-06-17	2005-06-17	HD0025A:
2005-04-26	2005-04-26	HD0025A:	2005-06-20	2005-06-20	HD0025A:
2005-04-27	2005-04-27	HD0025A:	2005-06-21	2005-06-21	HD0025A:
2005-04-28	2005-04-28	HD0025A:	2005-06-21	2005-06-21	HD0025A:
2005-04-29	2005-04-29	HD0025A:	2005-06-23	2005-06-23	HD0025A:
2005-04-30	2005-04-30	HD0025A:	2005-06-23	2005-06-23	HD0025A:
2005-05-02	2005-05-02	HD0025A:	2005-06-25	2005-06-25	HD0025A:

From	To	Borehole:sec	From	To	Borehole:sec
2005-06-25	2005-06-25	HD0025A:	2005-09-30	2005-09-30	KA2862A:
2005-06-27	2005-06-27	HD0025A:	2005-10-03	2005-10-04	KA1755A:3
2005-06-27	2005-06-27	HD0025A:	2005-10-03	2005-10-03	KA2511A:4
2005-06-27	2005-06-27	HD0025A:	2005-10-03	2005-10-03	KA2563A:4
2005-06-28	2005-06-28	HD0025A:	2005-10-03	2005-10-03	KA3510A:2
2005-06-28	2005-06-28	HD0025A:	2005-10-03	2005-10-04	KR0012B:
2005-06-29	2005-06-29	HD0025A:	2005-10-04	2005-10-05	KA3573A:
2005-06-30	2005-06-30	HD0025A:	2005-10-04	2005-10-04	KR0015B:
2005-07-05	2005-07-05	HD0025A:	2005-10-05	2005-10-06	KA2162B:1
2005-07-06	2005-07-06	HD0025A:	2005-10-05	2005-10-05	KXTT3:2
2005-07-07	2005-07-07	HD0025A:	2005-10-05	2005-10-05	KXTT4:2
2005-07-08	2005-07-08	HD0025A:	2005-10-05	2005-10-05	KXTT4:3
2005-07-11	2005-07-11	HD0025A:	2005-10-06	2005-10-06	KA3385A:1
2005-07-11	2005-07-11	HD0025A:	2005-10-06	2005-10-07	KA3385A:2
2005-07-14	2005-07-14	HD0025A:	2005-10-06	2005-10-07	KA3600F:
2005-07-14	2005-07-14	HD0025A:	2005-10-07	2005-10-10	KA2511A:
2005-07-14	2005-07-14	HD0025A:	2005-10-07	2005-10-10	KA2563A:
2005-07-18	2005-07-18	HD0025A:	2005-10-07	2005-10-07	KA3385A:1
2005-07-21	2005-07-21	HD0025A:	2005-10-07	2005-10-07	KA3385A:1
2005-07-21	2005-07-21	HD0025A:	2005-10-07	2005-10-07	KA3510A:
2005-07-21	2005-07-21	HD0025A:	2005-10-12	2005-10-14	KA1061A:1
2005-07-25	2005-07-25	HD0025A:	2005-10-18	2005-10-18	KA2598A:
2005-07-25	2005-07-25	HD0025A:	2005-11-03	2005-11-03	KXTT1:2
2005-07-28	2005-07-28	HD0025A:	2005-11-03	2005-11-03	KXTT1:2
2005-07-28	2005-07-28	HD0025A:	2005-11-03	2005-11-03	KXTT2:2
2005-08-01	2005-08-01	HD0025A:	2005-11-03	2005-11-03	KXTT2:2
2005-08-02	2005-08-02	HD0025A:	2005-11-03	2005-11-03	KXTT2:2
2005-08-02	2005-08-05	HD0025A:	2005-11-03	2005-11-03	KXTT3:3
2005-08-09	2005-08-09	HD0025A:	2005-11-03	2005-11-03	KXTT3:3
2005-08-10	2005-08-10	HD0025A:	2005-11-03	2005-11-03	KXTT4:2
2005-08-11	2005-08-11	HD0025A:	2005-11-03	2005-11-03	KXTT4:3
2005-08-12	2005-08-12	HD0025A:	2005-11-03	2005-11-03	KXTT4:3
2005-08-17	2005-08-17	HD0025A:	2005-11-03	2005-11-03	KXTT4:3
2005-08-18	2005-08-18	HD0025A:	2005-11-03	2005-11-03	KXTT4:4
2005-08-22	2005-08-22	HD0025A:	2005-11-03	2005-11-03	KXTT5:2
2005-08-29	2005-08-31	KA2050A:	2005-11-03	2005-11-03	KXTT5:2
2005-08-31	2005-08-31	SA3045A:	2005-11-15	2005-11-16	KA2598A:
2005-08-31	2005-08-31	SA3045A:	2005-11-17	2005-11-18	KXTT4:3
2005-08-31	2005-08-31	SA3045A:	2005-11-18	2005-11-18	KXTT1:2
2005-09-26	2005-09-26	KA3110A:	2005-11-18	2005-11-18	KXTT1:2
2005-09-26	2005-09-26	KA3573A:2	2005-11-18	2005-11-18	KXTT3:3
2005-09-26	2005-09-26	KA3600F:2	2005-11-18	2005-11-18	KXTT3:3
2005-09-26	2005-09-26	KI0025F02:2	2005-11-28	2005-12-12	KXTT1:2
2005-09-26	2005-09-26	KI0025F02:2	2005-11-28	2005-12-12	KXTT2:2
2005-09-26	2005-09-26	KI0025F02:2	2005-11-28	2005-11-28	KXTT3:3
2005-09-26	2005-09-26	KI0025F02:2	2005-11-28	2005-12-12	KXTT3:3
2005-09-27	2005-09-27	HD0025A:	2005-11-28	2005-11-28	KXTT4:3
2005-09-27	2005-09-28	KI0025F02:2	2005-11-28	2005-11-28	KXTT4:3
2005-09-28	2005-09-29	KI0025F02:2	2005-11-28	2005-11-28	KXTT4:3
2005-09-29	2005-09-29	KA2862A:1	2005-11-28	2005-11-28	KXTT4:3
2005-09-29	2005-09-30	KI0025F02:2	2005-11-28	2005-12-12	KXTT5:2
2005-09-30	2005-10-03	KA1061A:1	2005-11-29	2005-11-29	KF0051A01:1

From	To	Borehole:sec
2005-11-29	2005-11-29	KF0051A01:2
2005-11-29	2005-11-29	KF0051A01:3
2005-11-29	2005-11-29	KF0051A01:3
2005-11-29	2005-11-29	KF0051A01:3
2005-11-29	2005-11-29	KF0051A01:3
2005-11-29	2005-11-29	KF0051A01:3
2005-11-29	2005-11-29	KF0051A01:3
2005-11-29	2005-11-29	KF0051A01:4

From	To	Borehole:sec
2005-11-29	2005-11-29	KF0051A01:4
2005-11-29	2005-11-29	KF0051A01:4
2005-11-30	2005-11-30	HD0025A:
2005-11-30	2005-11-30	KA2862A:
<i>2005-12-02</i>	2005-12-02	KXTT4:3
<i>2005-12-15</i>	2005-12-15	HD0025A:

Italics = This information is not found in the Sicada database or the information is questioned.

4.4 Packer expansion and release

Packers often isolate different fractures or fracture zones from each other in order to prevent flow along the borehole, which otherwise may act as a connection between fractures or zones. Therefore, release and expansion of packers may have an influence on the groundwater system. The dates for packer expansion/release in surface boreholes are listed in Table 4-3 (this refers to the large borehole packers and not the PEM-packers). Surface boreholes not included in the table have no packers.

In Table 4-4, dates for packer expansion and release in tunnel boreholes are presented. In a few cases, data on expansion/release are missing in the database, which means that two entries for packer expansion or release may occur after one another.

Table 4-3 Packer expansion and release in surface boreholes.

Borehole	Expansion	Release
HAS04	2002-03-04	
HAS17	1999-02-24	2005-04-19
HAS19	1990-06-10	2005-04-19
HBH04	2002-02-28	
HMJ01	1991-12-13	
KAS02	1991-08-07	
KAS03	2000-10-09	<i>2005-07-04</i>

Borehole	Expansion	Release
KAS08	1989-05-01	
KAS09	2000-10-05	
KAS16	1992-10-20	
KBH02	1992-05-07	

Italics = This information is not found in the Sicada database or the information is questioned.

Table 4-4 Packer expansion and release in tunnel boreholes.

Borehole	Expansion	Release	Borehole	Expansion	Release
HA1960A	1993-07-13		KA3563I01	2001-04-03	
KA1131B	1994-10-25		KA3566C01	2001-04-02	
KA1751A	2002-01-30		KA3566G01	2001-03-20	
KA1754A	2002-01-30		KA3566G02	2001-03-20	
KA1755A	2003-05-06		KA3568D01	2001-04-02	
KA2048B	2002-01-11		KA3572G01	1999-08-05	
KA2050A	2001-12-13		KA3573A	1999-02-15	2000-12-05
KA2162B	1999-10-28		KA3573A	2000-12-05	2000-12-05
KA2511A	1999-03-17		KA3573C01	2001-04-02	
KA2563A	1999-03-15		KA3574D01	2001-04-02	
KA2598A	1998-03-04		KA3574G01	1999-08-05	
KA2858A	2002-01-11		KA3576G01	1999-02-11	
KA2862A	1997-09-22		KA3578C01	2001-04-03	
KA3005A	2001-11-07		KA3578G01	1999-08-05	2000-12-06
KA3010A	2004-06-29		KA3578H01	2001-04-03	
KA3065A02	2002-06-29		KA3579D01	2001-04-03	
KA3065A03	2002-06-17		KA3579G	1999-08-05	
KA3067A	2002-06-29		KA3584G01	1999-02-03	
KA3068A	2002-06-29		KA3588C01	2001-04-03	
KA3105A	2001-12-19		KA3588D01	2001-04-03	
KA3110A	2004-06-29		KA3588I01	2001-04-03	
KA3385A	2003-05-06		KA3590G01	1999-08-05	
KA3386A01	2002-08-21	2002-09-02	KA3590G02	1999-08-05	
KA3386A01	2005-12-05		KA3592C01	2001-04-03	
KA3510A	2001-05-09		KA3593G	1999-08-05	
KA3539G	2003-04-26		KA3597D01	2001-04-03	
KA3542G01	2003-04-26		KA3597H01	2001-04-03	
KA3542G02	2003-04-26		KA3600F	1999-02-15	2000-12-05
KA3543A01	2002-01-30		KA3600F	2000-12-05	2000-12-05
KA3543I01	2002-01-30		KF0051A01	1998-06-12	2003-02-13
KA3544G01	2003-04-26		KF0051A01	2003-02-13	
KA3546G01	2003-04-26		KG0021A01	2001-05-30	
KA3548A01	2003-04-26		KG0048A01	2001-05-29	
KA3548D01	2002-01-30		KI0023B	1998-06-17	
KA3548G01	2002-01-30		KI0025F	1999-07-29	
KA3550G01	2003-04-27		KI0025F02	2003-09-02	
KA3550G05	2003-04-27		KI0025F03	2003-08-20	
KA3551G05	2003-04-27		KR0012B	2002-01-08	2002-04-09
KA3552A01	2002-01-30		KR0013B	2002-01-08	2002-04-09
KA3552G01	1999-08-04	2000-01-19	KR0015B	2002-01-08	2002-04-09
KA3553B01	2002-01-30		KXTT1	2001-11-07	
KA3554G01	2003-04-27		KXTT2	2001-11-07	2005-11-18
KA3554G02	2003-04-27		KXTT2	2005-11-18	
KA3557G	2003-04-27		KXTT3	2001-11-07	
KA3563A01	2001-04-02		KXTT4	2001-11-06	
KA3563D01	2001-04-02		KXTT5	2004-06-30	
KA3563G	1999-08-05		SA3045A	2002-06-29	

4.5 Drilling

Only tunnel boreholes have been drilled during 2005.

During drilling, water is injected under high pressure into the borehole, and the effect at different locations in the borehole may be either injection or removal of water. During drilling interruptions, water flows out of the borehole and the net result on pressure registrations mainly seems to be a pumping effect. In Table 4-5, dates when boreholes were drilled, borehole length and type of drilling are presented. Drilling before rounds and drilling for bolting are not included in the table.

Table 4-5 Drilling

Start	Stop	Borehole	Borehole length (m)	Type of drilling
2005-01-03	2005-01-04	KA3375G02	1.60	Core drilling
2005-01-05	2005-01-23	DA1619A02	94.45	Deposit hole boring
2005-01-11	2005-01-12	KA3375G03	1.60	Core drilling
2005-01-31	2005-02-02	KA3386A02	6.20	Core drilling
2005-02-08	2005-02-15	KA3386A03	5.56	Core drilling
2005-02-16	2005-02-16	KA3386A04	5.59	Core drilling
2005-02-22	2005-02-28	KA3386A05	4.98	Core drilling
2005-03-03	2005-03-07	KA3386A06	5.59	Core drilling
2005-03-10	2005-03-17	KQ0053A01	7.60	Core drilling
2005-03-19	2005-03-19	KQ0053A02	7.52	Core drilling
2005-03-22	2005-03-23	KQ0053A03	7.42	Core drilling
2005-03-28	2005-03-29	KQ0053A04	7.10	Core drilling
2005-03-30	2005-04-05	KA3152G01	11.70	Core drilling
2005-03-31	2005-04-05	KQ0062G01	5.00	Core drilling
2005-04-07	2005-04-14	KA3152G02	12.27	Core drilling
2005-04-11	2005-04-11	KQ0049A01	0.50	Core drilling
2005-04-14	2005-04-18	KQ0055A01	1.80	Core drilling
2005-04-21	2005-04-22	KQ0065B01	0.70	Core drilling
2005-04-25	2005-04-26	KQ0065B02	1.20	Core drilling
2005-04-28	2005-04-28	TASQ	65.50	Various drilling
2005-09-14	2005-09-14	KQ0064B06	0.33	Core drilling
2005-09-14	2005-09-15	KQ0064A06	0.45	Core drilling
2005-09-15	2005-09-15	KQ0064B07	0.43	Core drilling

4.6 Tests

A number of different tests are described below. However, during 2005 only a few of the tests have been performed.

Tracer tests are performed in a number of different ways:

Dilution test is a single-hole test where the tracer is circulated in one section. No water is withdrawn or added to the circulation section (except for a small amount of tracer solution). The test is performed during either natural or stressed hydraulic gradient.

During *radially converging or dipole tests* water is pumped out of one section and tracer injected in another section. In radially converging tests, there is usually no excess pressure in the injection section while during dipole tests a certain injection flow is maintained during the test. In Table 4-6, the sections that were pumped during the tests are listed.

Flow logging means that a single or a pair of packers is expanded at certain intervals in the borehole and the flow rate from inside/between the packers is measured.

Flow logging with the UCM probe and **Flow logging with thermal probe.** Water is pumped or flowed out of the borehole while the probe is moved along the borehole to measure the flow.

Interference tests mean that pumping or flowing is done in one section to induce and study a response in other sections. The length of such a test and the magnitude of flow may vary over a wide range.

Pressure build-up test (PBT). The borehole is discharged between 45 minutes and a few hours before the valve is closed and the pressure recovery is studied.

Recovery test. A hydraulic test where the recovery after withdrawal of water is studied.

Constant pressure test is a hydraulic test where water is either injected or withdrawn from a test section of a borehole under constant pressure.

Transient injection test. A hydraulic test where water is injected under constant pressure. Transient evaluation.

Steady state injection test. A hydraulic test performed in a similar way as a transient injection test but generally of shorter duration. Steady state evaluation.

Pulse injection test is a type of water injection test where the test section is short (50 mm) and the injection under constant pressure is performed during only a few minutes (a pulse).

Constant flow test. A hydraulic test performed in the same way as a constant pressure test, but instead of pressure, the flow rate is held constant.

Outflow tests with constant flow or constant pressure are equivalent to pumping tests in a surface borehole.

Slug test is a type of disturbance test. This type of slug test is performed by expanding a double packer at certain intervals in the borehole. The pressure in the section between the packers is increased momentarily and the recovery is then studied during 5-20 minutes.

Table 4-6 Tests

From	To	Borehole:sec	Borehole length (m)		Activity
			from	to	
2005-01-19	2005-01-19	KA3539G:2	15.85	17.60	Pressure Build Up Test (PBT)
2005-01-19	2005-01-19	KG0021A01:3	35.00	36.00	Interference test hole
2005-01-20	2005-01-20	KA3548A01:3	8.80	10.75	Pressure Build Up Test (PBT)
2005-01-20	2005-01-20	KA3542G01:3	18.60	20.30	Pressure Build Up Test (PBT)
2005-01-20	2005-01-20	KA3554G01:2	22.60	24.15	Pressure Build Up Test (PBT)
2005-01-20	2005-01-20	KA3539G:2	15.85	17.60	Interference test hole
2005-01-20	2005-01-20	KA3539G:2	15.85	17.60	Pressure Build Up Test (PBT)
2005-01-21	2005-01-21	KA3572G01:2	2.70	5.30	Pressure Build Up Test (PBT)
2005-01-21	2005-01-21	KA3542G01:3	18.60	20.30	Pressure Build Up Test (PBT)
2005-01-21	2005-01-21	KA3554G01:2	22.60	24.15	Pressure Build Up Test (PBT)
2005-01-21	2005-01-21	KA3590G02:1	25.50	30.01	Interference test hole
2005-01-22	2005-01-22	KA3542G01:3	18.60	20.30	Pressure Build Up Test (PBT)
2005-01-22	2005-01-22	KA3542G02:2	25.60	27.20	Pressure Build Up Test (PBT)
2005-01-22	2005-01-22	KA3554G01:2	22.60	24.15	Interference test hole
2005-01-22	2005-01-22	KA3554G01:2	22.60	24.15	Pressure Build Up Test (PBT)
2005-01-23	2005-01-23	KA3542G02:2	25.60	27.20	Pressure Build Up Test (PBT)
2005-01-23	2005-01-23	KA3548A01:3	8.80	10.75	Pressure Build Up Test (PBT)
2005-01-23	2005-01-23	KA3552G01:2	4.35	6.05	Pressure Build Up Test (PBT)
2005-01-23	2005-01-23	KG0048A01:3	32.80	33.80	Interference test hole
2005-01-24	2005-01-24	KA3548A01:3	8.80	10.75	Pressure Build Up Test (PBT)
2005-01-24	2005-01-24	KA3554G02:4	10.50	12.20	Pressure Build Up Test (PBT)
2005-01-24	2005-01-24	KA3563G:4	1.30	1.50	Pressure Build Up Test (PBT)
2005-01-24	2005-01-24	KA3542G02:5	2.00	8.00	Interference test hole
2005-01-25	2005-01-25	KA3566G01:2	20.00	21.50	Pressure Build Up Test (PBT)
2005-01-25	2005-01-25	KA3574G01:3	1.80	4.10	Pressure Build Up Test (PBT)
2005-01-25	2005-01-25	KA3546G01:2	6.75	8.30	Pressure Build Up Test (PBT)
2005-01-25	2005-01-25	KA3554G02:4	10.50	12.20	Pressure Build Up Test (PBT)
2005-01-25	2005-01-26	KA3573A:4	10.50	12.50	Interference test hole
	2005-05-20	KI0025F03:3	123.03	128.03	Pumping, stop
2005-05-20	2005-05-23	KA3386A02:			Pressure Build Up Test (PBT)
2005-05-23	2005-05-24	KA3386A02:			Pressure Build Up Test (PBT)
2005-05-24	2005-05-24	KA3386A02:			Pressure Build Up Test (PBT)
2005-09-27	2005-09-27	KI0025F02:2	135.10	139.05	Tracer Injection
2005-09-29	2005-09-30	KI0025F02:2	135.10	139.05	Radially converging Test Hole
2005-11-17	2005-11-17	KXTT4:3	11.92	12.42	Water injection in borehole
2005-11-18	2005-11-18	KXTT4:4	8.42	10.92	Water injection in borehole
2005-11-28	2005-11-28	KXTT4:3	11.92	12.42	Water injection in borehole
2005-11-28	2005-11-28	KXTT4:3	11.92	12.42	Tracer Injection
2005-11-28	2005-12-02	KXTT4:3	11.92	12.42	Water injection in borehole
2005-11-29	2005-11-29	KF0051A01:1	9.65	11.70	Water injection in borehole
2005-11-29	2005-11-29	KF0051A01:2	7.95	8.65	Water injection in borehole
2005-11-29	2005-11-29	KF0051A01:3	5.36	6.95	Water injection in borehole
2005-11-29	2005-11-29	KF0051A01:4	3.76	4.36	Water injection in borehole
2005-11-29	2005-12-09	KF0051A01:4	3.76	4.36	Water injection in borehole
2005-11-29	2005-12-09	KF0051A01:3	5.36	6.95	Water injection in borehole
2005-12-02		KXTT4:3	11.92	12.42	Pumping, start
	2005-12-12	KXTT4:3	11.92	12.42	Pumping, stop

5 Results

5.1 Groundwater levels in surface boreholes

In most surface boreholes, there have only been small changes in groundwater levels during 2005. In most of the borehole sections, the change over the year is within some metre and the levels are mainly decreasing.

The response to precipitation varies from borehole to borehole. In some boreholes, there is a fairly quick response with pronounced peaks after each rain (for example HAS01 and HAS13). In other boreholes, the response is more or less dampened (for example HAS07), while in some sections it is difficult to see any responses to rain at all. The dominating features of the seasonal variation during 2005 are high precipitation during February, June, July and December and low precipitation in April, September and November (see Figure 5-2).

In the short term, the groundwater levels in surface boreholes seem to be mainly influenced by variations in climate factors. However, in borehole HAS06 a pronounced effect from tunnel activities can be seen. As seen earlier, the groundwater level in HAS06 responds to activities in the tunnel borehole KA3065A03 and its surrounding boreholes. At the end of October 2005, some of the KXTT-boreholes in the tunnel were re-instrumented. This caused pressure drawdowns in KA3065A03 and its neighbouring boreholes and a response (decreasing level) is also seen in HAS06. In addition, there are probably minor responses also in other boreholes due to tunnel activities.

5.2 Groundwater pressure in tunnel boreholes

In the tunnel, the pressure in most of the borehole sections decreased by about 20 - 200 kPa during 2005, but there were also sections with increasing pressure during the year. Due to a lot of activities in the tunnel (for example drilling, packer expansion and releases, opening, closing and pumping different boreholes), it is difficult to say whether the pressure changes are “natural” or due to the activities. Seen over the last years, the pressure has been steadily decreasing in most of the boreholes except during 2003 when many borehole sections showed increasing pressure.

Activities during the year causing major disturbances, as seen in many boreholes, in the tunnel were:

Hydraulic tests performed in boreholes in the Prototype area at the **end of January** and also at the **end of November**.

Pumping was stopped in borehole section KI0025F03:3 in the **middle of May**. The pumping was started in October 2003.

Drainage of a filter mat in the G-tunnel (also called the LOT-tunnel) in the **beginning of September**.

Re-instrumentation of boreholes KXTT3 and KXTT4 at the **end of October**.

Due to a computer error at a measurement station (HMSC), data are missing for **some days in March, April and August** for the boreholes connected to this station.

5.3 Water flow in the tunnel

The flow in all gauging boxes is shown in Figure 5-1 as daily mean values during October - December 2005. For comparison purposes, data for the corresponding period during the years 1995-2004 are also illustrated. Although data is missing for some boxes for certain periods (especially during 1995 and 1996), the diagram gives realistic values since the flow has been fairly constant during the period presented.

Figure 5-1 shows that, seen over all years, the mean flow for the comparison period October – December has decreased at most locations.

The low values for MA1232G during 2001, accompanied by high values for MA1372G, are caused by sprayed concrete in the ditch collecting water to MA1232G. As a result, some of the water normally collected by this ditch flowed over to the next gauging box, MA1372G.

All values for 2005 from MA1745G are missing due to erroneous values from the water level gauge.

In January 2002, a new gauging box, MG0004G, was installed. The water from the G-tunnel, earlier collected in the gauging box MF0061G, is now lead to MG0004G. As a result, a decrease in flow in MF0061G was noted and this also explains the low values for year 2002 and forward in Figure 5-1.

In February 2004, measurements were started in three new weirs, MA3515G, MA3525G and MA3535G. These weirs are collecting water from different sections in the Prototype repository tunnel. The accuracy of the flow calculations for these weirs is very low, the error may be on the order of a factor 10 and almost always resulting in flow values that are too high. However, this water is then added to gauging box MA3426G, as it was before the new weirs were installed.

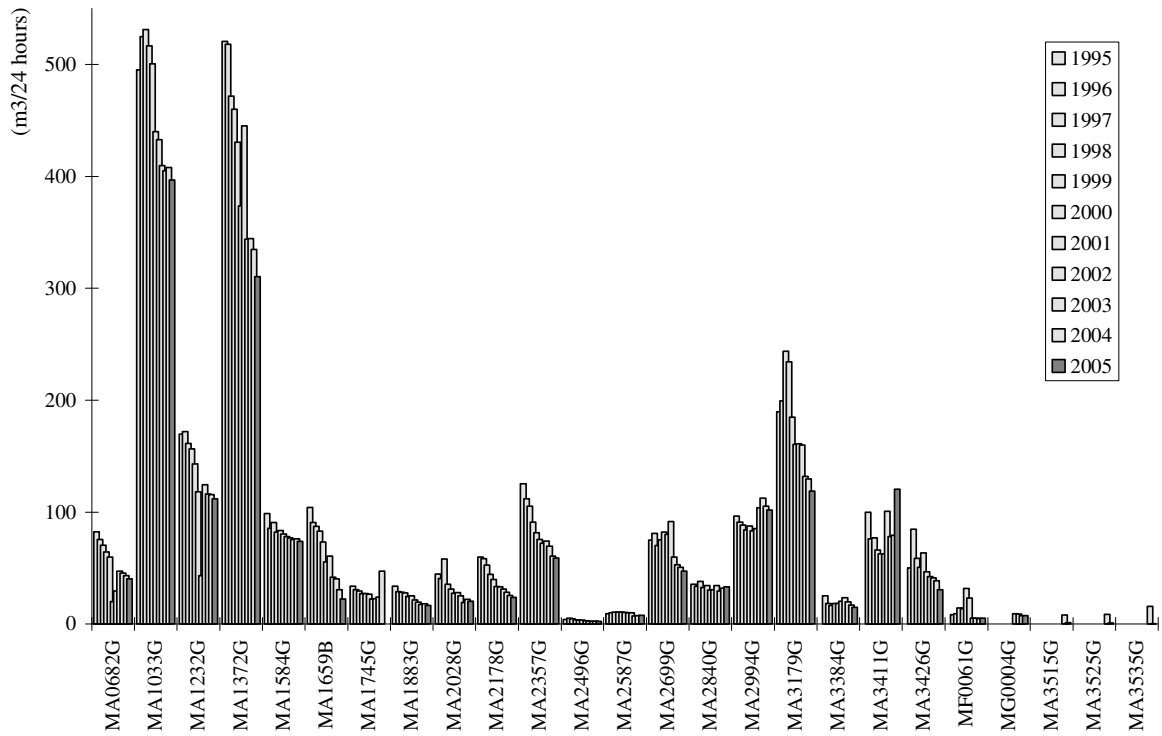


Figure 5-1 Water flow in gauging boxes as a mean during October - December.

5.4 Water flow in tunnel pipes

The pumped flow rate out from the tunnel has been steadily decreasing since 1995.

The mean daily flow of water in the pipes during October - December for the last eleven years are given in Table 5-1.

Table 5-1 Water flow in tunnel pipes, October - December.

Year	Water in (m ³ /d)	Water out (m ³ /d)
1995	4.4	2479
1996	9.6	2438
1997	11.0	2393
1998	9.2	2268
1999	—	2105
2000	—	1930
2001	—	1848
2002	—	1821
2003	—	1748
2004	—	1730
2005	—	1697

5.5 Electrical conductivity of tunnel water

Electrical conductivity of tunnel water has been measured in eight gauging boxes for flow measurements, at one location along the discharge pipe leading water from the gauging boxes to one of the sumps and in two of the sumps (see section 3.6).

The same electrical conductivity meter is used for periods in the four gauging boxes MA3384G, MA3411G, MA3426G, MF0061G and in the sump PG5, all in the deepest part of the tunnel system.

5.6 Precipitation

Monthly precipitation at the SMHI-station in Oskarshamn (see section 3.7.1) for 2005, as well as monthly mean for the period 1961-1990 and yearly values, are presented in Figures 5-2 and 5-3. All precipitation values are measured values without any corrections.

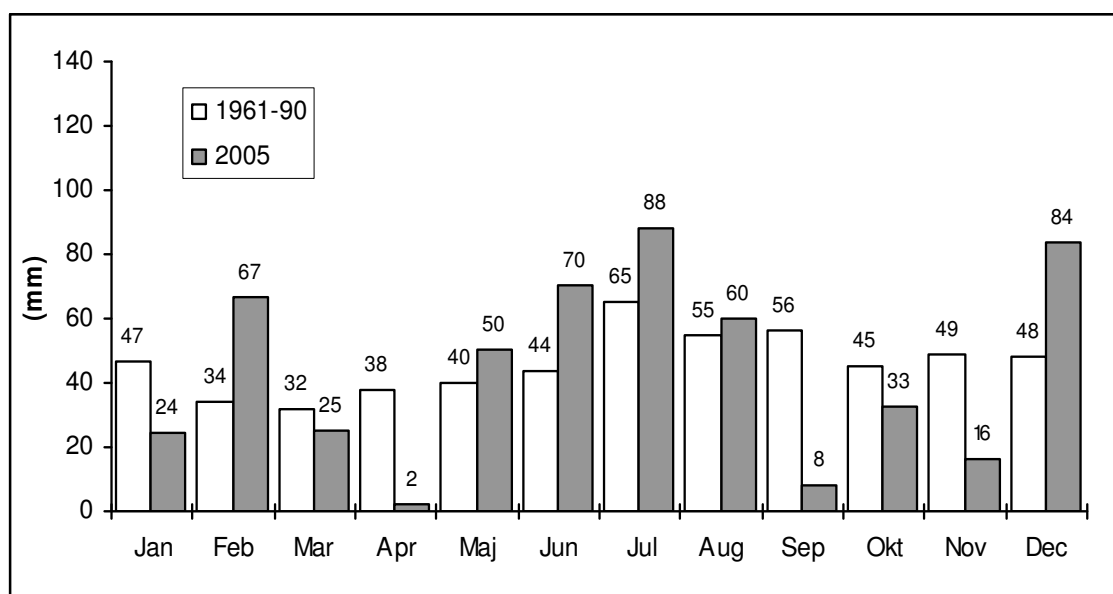


Figure 5-2 Precipitation at Oskarshamn: Monthly values 2005 and monthly means 1961 – 1990.

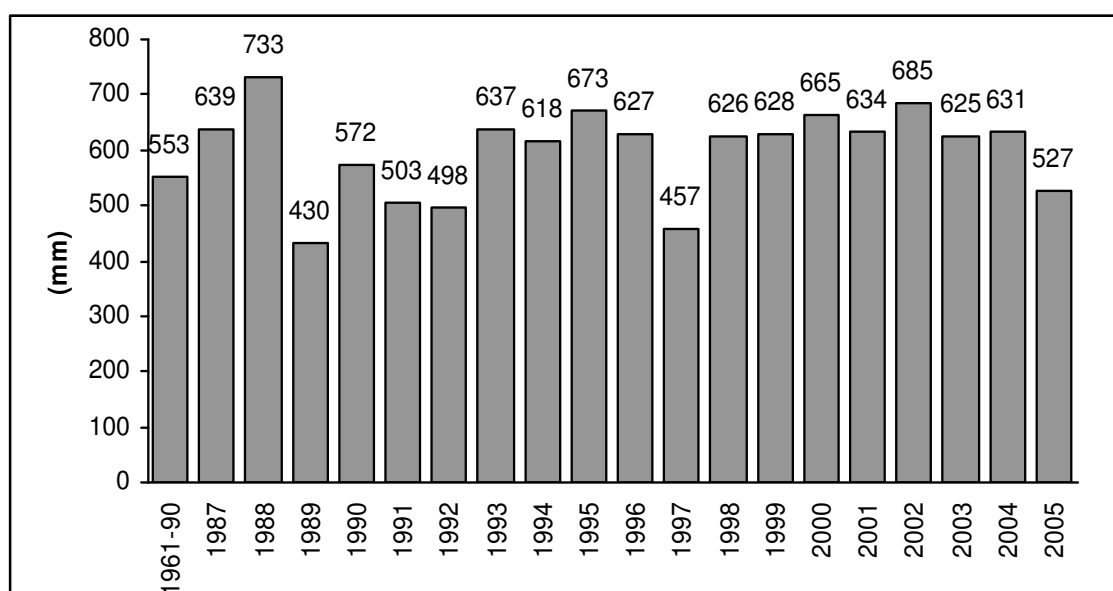


Figure 5-3 Precipitation at Oskarshamn. Yearly values 1987 - 2005 and yearly mean for the period 1961 - 1990.

5.7 Air temperature

Monthly mean temperature at the SMHI-station in Oskarshamn (see section 3.7.2) for 2005, as well as monthly mean for the period 1961-1990 and yearly values, are presented in Figures 5-4 and 5-5.

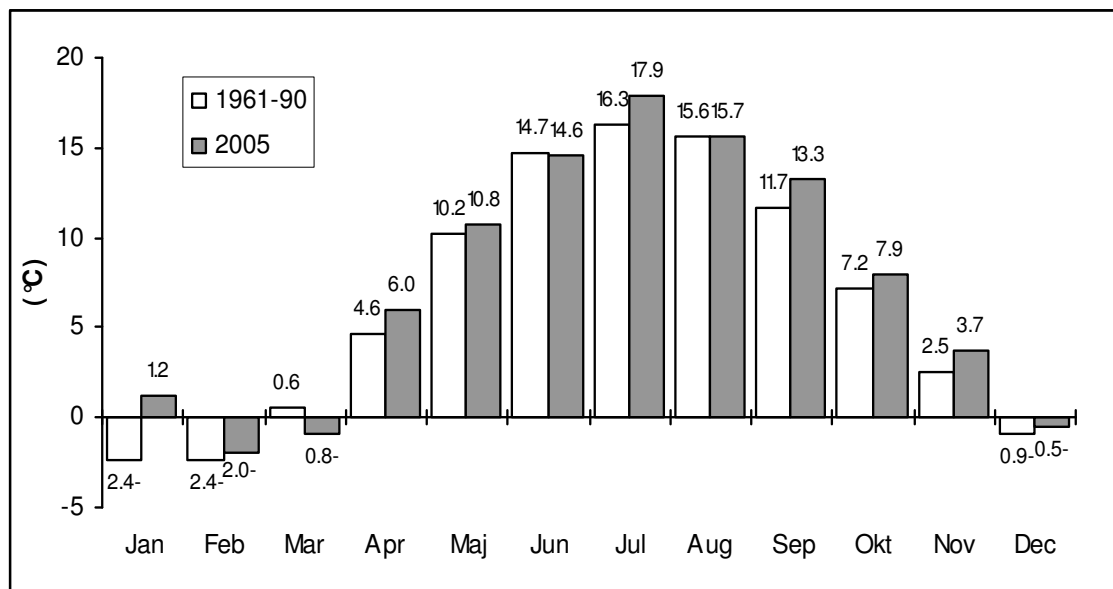


Figure 5-4 Temperature at Oskarshamn: Monthly values 2005 and monthly means 1961 – 1990.

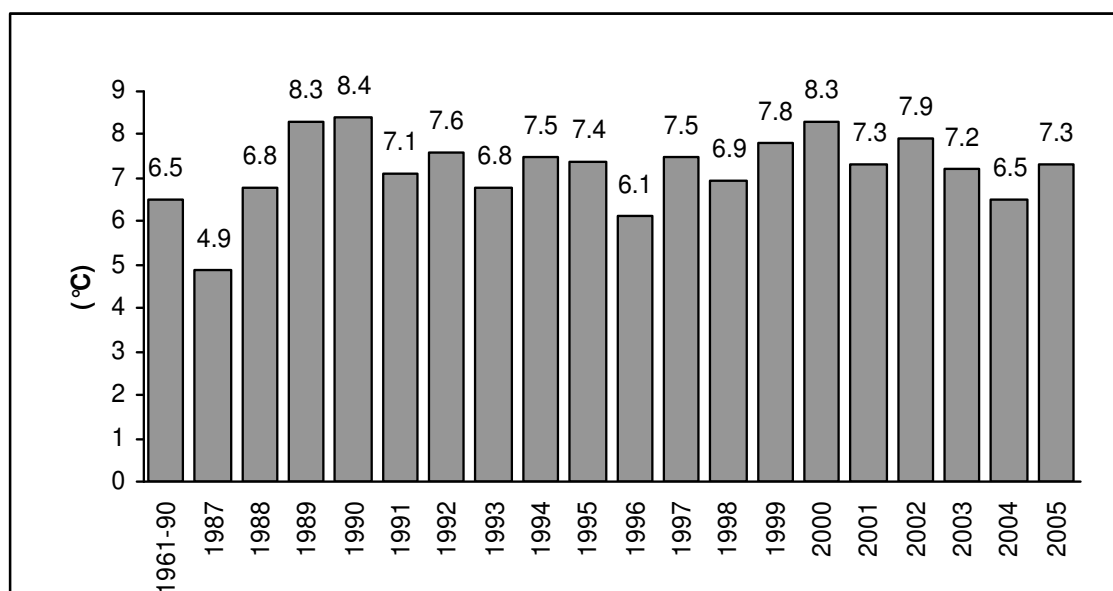


Figure 5-5 Temperature at Oskarshamn. Yearly values 1987 - 2005 and yearly mean for the period 1961 - 1990.

5.8 Potential evapotranspiration

Monthly and yearly amounts of potential evapotranspiration (see section 3.7.3) are presented in Figures 5-6 and 5-7. Since evaporation is not normally calculated by SMHI, there are no mean values for the period 1961-1990 available. Due to changes of the origin of the involved variables (see section 3.7.3), the calculated potential evapotranspiration seems to be considerably lower from August 1995 and onwards.

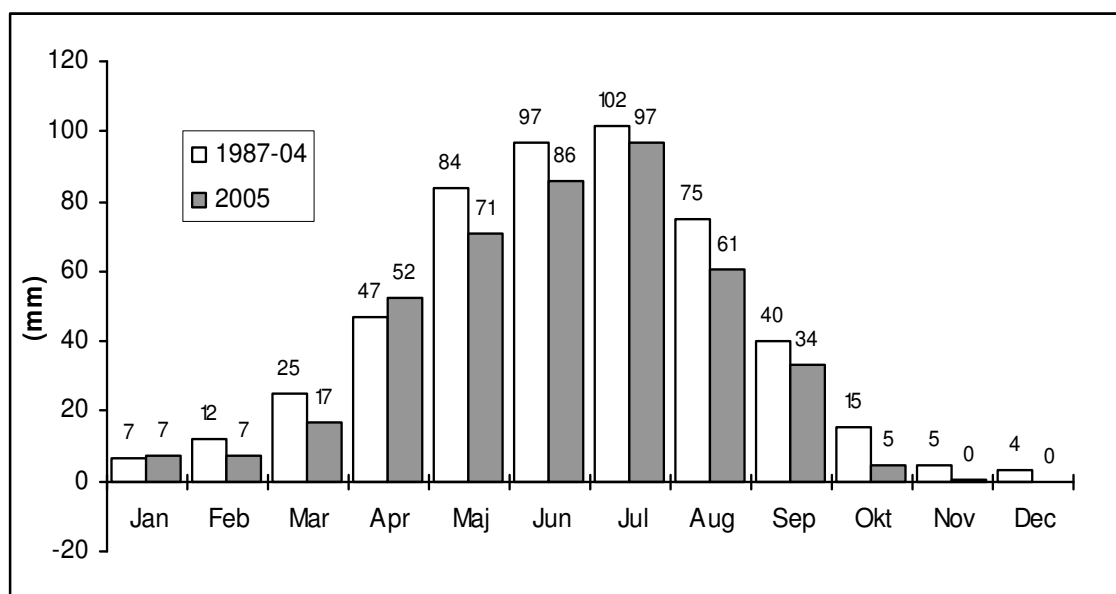


Figure 5-6 Potential evapotranspiration. Monthly values for Gladhammar 2005 and monthly means 1987 - 2005 (an average from Gladhammar and Ölands Norra Udde is used before August 1st, 1995).

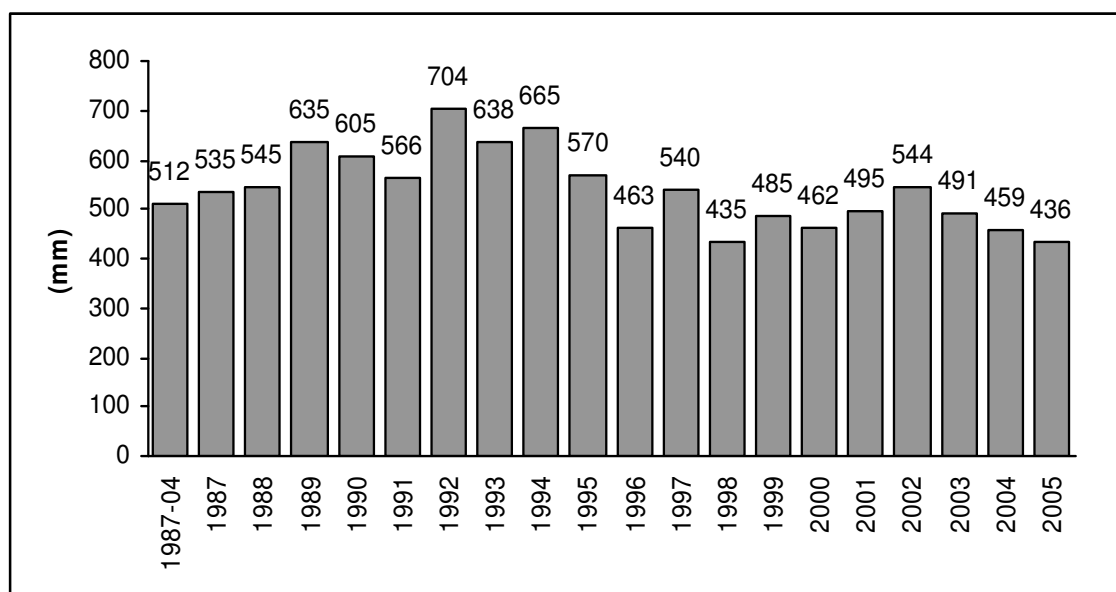


Figure 5-7 Potential evapotranspiration as average from Gladhammar and Ölands Norra Udde (only Gladhammar from August 1st, 1995). Yearly values 1987 - 2005 and yearly mean for the period 1987 - 2005.

References

Eriksson, B., 1980. The water balance of Sweden. Annual mean values (1931-60) of precipitation, evaporation and run-off (in Swedish). SMHI Nr RMK 18 and Nr RHO 21 (1980), SMHI, Norrköping.

Gottschalk, L., 1982. Hydrologi (in Swedish). Compendium in hydrology, Lund.

Manual för Hydro Monitoring System (HMS), 1994. SKB Tekniskt PM Nr. 25-94-014, SKB, Stockholm.

Nyberg, G., Jönsson, S., Ekman, L., 1991. Äspö Hard Rock Laboratory. Groundwater level program. Report for the Period 1987-1989. SKB Progress Report PR 25-90-18.

Nyberg, G., Jönsson, S., Ekman, L., 1992a. Äspö Hard Rock Laboratory. Groundwater level program. Report for 1990. SKB Progress Report PR 25-91-19.

Nyberg, G., Jönsson, S., Ekman, L., 1992b. Äspö Hard Rock Laboratory. Groundwater level program. Report for 1991. SKB Progress Report PR 25-92-16.

Nyberg, G., Jönsson, S., Ekman, L., 1993. Äspö Hard Rock Laboratory. Groundwater level program. Report for 1992. SKB Progress Report PR 25-93-09.

Nyberg, G., Jönsson, S., Ekman, L., 1994. Äspö Hard Rock Laboratory. Groundwater level program. Report for 1993. SKB Progress Report PR 25-94-23.

Nyberg, G., Jönsson, S., Ekman, L., 1995. Äspö Hard Rock Laboratory. Groundwater level program. Report for 1994. SKB Progress Report PR 25-95-08.

Nyberg, G., Jönsson, S., Ekman, L., 1996. Äspö Hard Rock Laboratory. Hydro monitoring system. Report for 1995. SKB Progress Report PR HRL-96-17.

Nyberg, G., Jönsson, S., Ekman, L., 1997. Äspö Hard Rock Laboratory. Hydro monitoring program. Report for 1996. SKB Progress Report PR HRL-97-17.

Nyberg, G., Jönsson, S., Ekman, L., 1998. Äspö Hard Rock Laboratory. Hydro monitoring program. Report for 1997. SKB Progress Report PR HRL-98-19.

Nyberg, G., Jönsson, S., Onkenhout, J., 1999. Äspö Hard Rock Laboratory. Hydro monitoring program. Report for 1998. SKB International Progress Report IPR-99-20.

Nyberg, G. and Jönsson, S., 2000. Äspö Hard Rock Laboratory. Hydro monitoring program. Report for 1999. SKB International Progress Report IPR-00-17.

Nyberg, G., Jönsson, S., Wass, E., 2001. Äspö Hard Rock Laboratory. Hydro monitoring program. Report for 2000. SKB International Progress Report IPR-01-29.

Nyberg, G., Jönsson, S., Wass, E., 2002. Äspö Hard Rock Laboratory. Hydro monitoring program. Report for 2001. SKB International Progress Report IPR-02-56.

Nyberg, G., Jönsson, S., Wass, E., 2003. Äspö Hard Rock Laboratory. Hydro monitoring program. Report for 2002. SKB International Progress Report IPR-03-33.

Nyberg, G., Jönsson, S., Wass, E., 2004. Äspö Hard Rock Laboratory. Hydro monitoring program. Report for 2003. SKB International Progress Report IPR-04-46.

Nyberg, G., Jönsson, S., Wass, E., 2005. Äspö Hard Rock Laboratory. Hydro monitoring program. Report for 2004. SKB International Progress Report IPR-05-26.

Wass, E., Nyberg, G., Askling, P., 2005. Äspölaboratoriet. Kalibrering av hydrosensorer 2005-03-14 – 2005-03-17. GRAP 05029, GEOSIGMA Uppsala.